

Cadillac Place

3044 West Grand Boulevard, Detroit 48202

ELEVATORS UPGRADE - PHASE 1

State Facilities Administration

The Department of Technology, Management, and Budget

The State of Michigan

BIDS

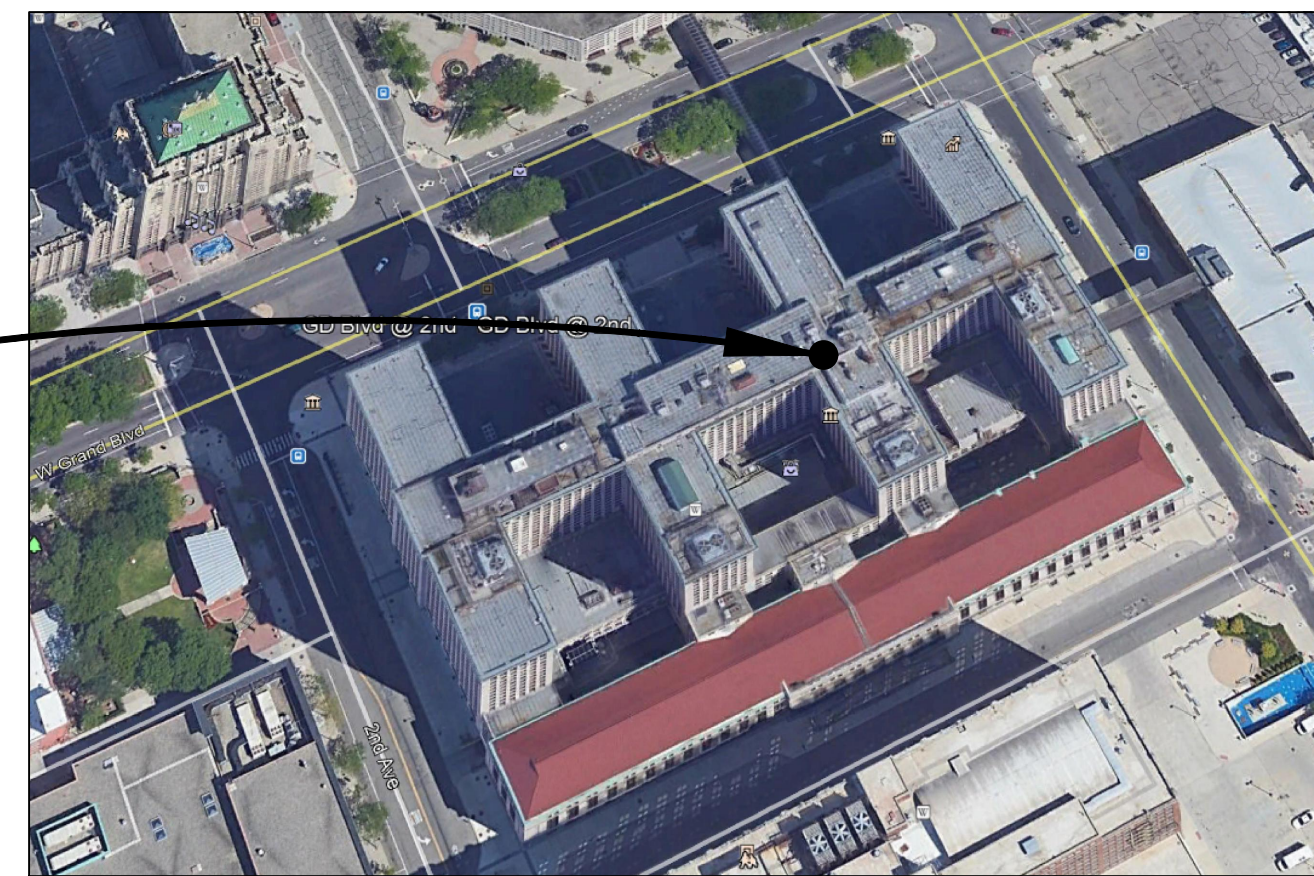
JUNE 18, 2024

BIDS 6/18/2024
 90% REVIEW SET 3/30/2023
 PHASE 100 & 200 4/6/22
 DATE ISSUED

DRAWN BY
 CHECKED BY

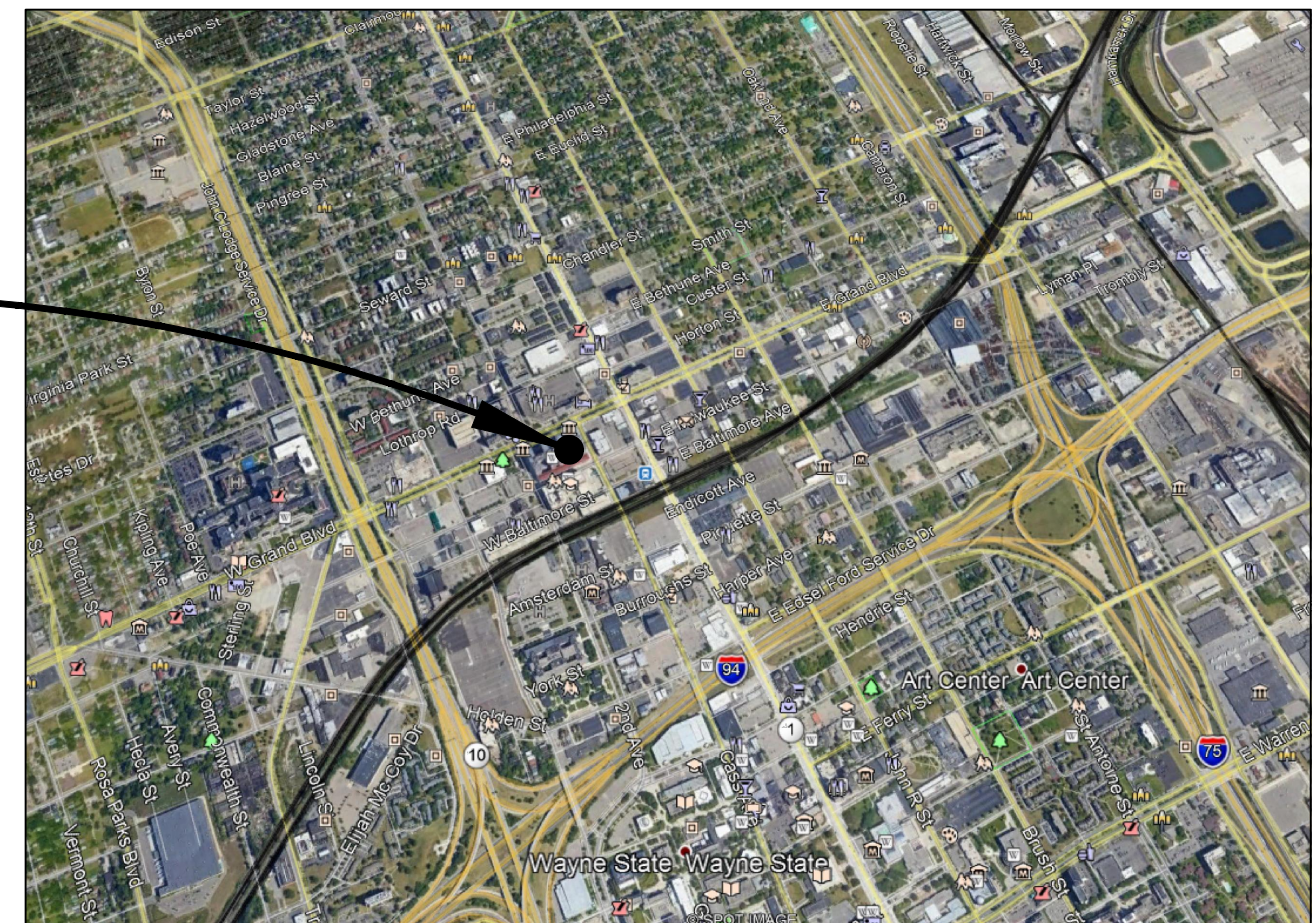
HOBBS + BLACK
ARCHITECTS
 100 N. State St.
 Ann Arbor, MI 48104
 P: 734.663.4189
 www.hobbs-black.com

PROJECT LOCATION



SITE LOCATION MAP
 SCALE - N.T.S.

PROJECT LOCATION



SITE VICINITY MAP
 SCALE - N.T.S.

DRAWING INDEX

GENERAL:

A-000 TITLE SHEET & INDEX

ARCHITECTURAL:

A-050 COMPOSITE PLAN & CODE INFORMATION
 A-100 SE BANK FLOOR PLANS
 A-110 PENTHOUSE FLOOR PLAN & ROOF PLAN
 A-300 HOISTWAY CROSS SECTION

MECHANICAL \ PLUMBING \ ELECTRICAL:

M-100 MECHANICAL SYMBOLS, ABBREVIATIONS & NOTES
 M-300 ROOF PLAN - MECHANICAL DEMOLITION
 M-400 PENTHOUSE FLOOR PLAN - MECHANICAL NEW
 M-401 ROOF PLAN - MECHANICAL NEW

P-100 PLUMBING SYMBOLS, ABBREVIATIONS & NOTES
 P-300 SUB BASEMENT FLOOR PLAN - PLUMBING DEMOLITION
 P-400 SUB BASEMENT FLOOR PLAN - PLUMBING NEW

E-100 ELECTRICAL SYMBOLS, ABBREVIATIONS, NOTES, SCHEDULES
 E-300 BASEMENT FLOOR PLAN ELECTRICAL DEMOLITION
 E-301 FIRST FLOOR PLAN ELECTRICAL DEMOLITION
 E-302 PENTHOUSE FLOOR PLAN ELECTRICAL DEMOLITION
 E-303 ROOF PLAN ELECTRICAL DEMOLITION
 E-500 BASEMENT FLOOR PLAN ELECTRICAL POWER
 E-501 FIRST FLOOR PLAN ELECTRICAL POWER
 E-502 PENTHOUSE FLOOR PLAN ELECTRICAL POWER
 E-503 ROOF PLAN ELECTRICAL POWER

STATE OF MICHIGAN
 DEPARTMENT OF TECHNOLOGY, MANAGEMENT AND BUDGET
 STATE FACILITIES ADMINISTRATION
 DESIGN AND CONSTRUCTION DIVISION
 ADAM P. LACH, R.A., DIRECTOR

CADILLAC PLACE ELEVATORS UPGRADES - PHASE 1
 3044 W. GRAND BLVD. DETROIT, MI. 48202
 SOM File No. 171/21275.MNB

MATRIX
 CONSULTING ENGINEERS, INC.
 1601 E César E. Chávez Ave
 Lansing, MI 48906

Lerch Bates
 BUILDING INSIGHT
 950 Boston Street SE Grand
 Rapids MI 49507
 CONSULTANT

COVER SHEET & INDEX

SHEET TITLE

21323

PROJECT NUMBER

A-000

SHEET NUMBER

ENVIRONMENTAL ENGINEERS

NTH Consultants, Ltd.
 41780 Six Mile Road, Suite 200
 Northville, Michigan 48168
 PH: (248) - 662 - 2740

MEP ENGINEERS

MATRIX CONSULTING ENGINEERS, INC.
 1601 E. Cesar E. Chavez Ave.
 Lansing, Michigan 48906
 PH: (517) - 487 - 2511
 FAX: (517) - 487 - 2544

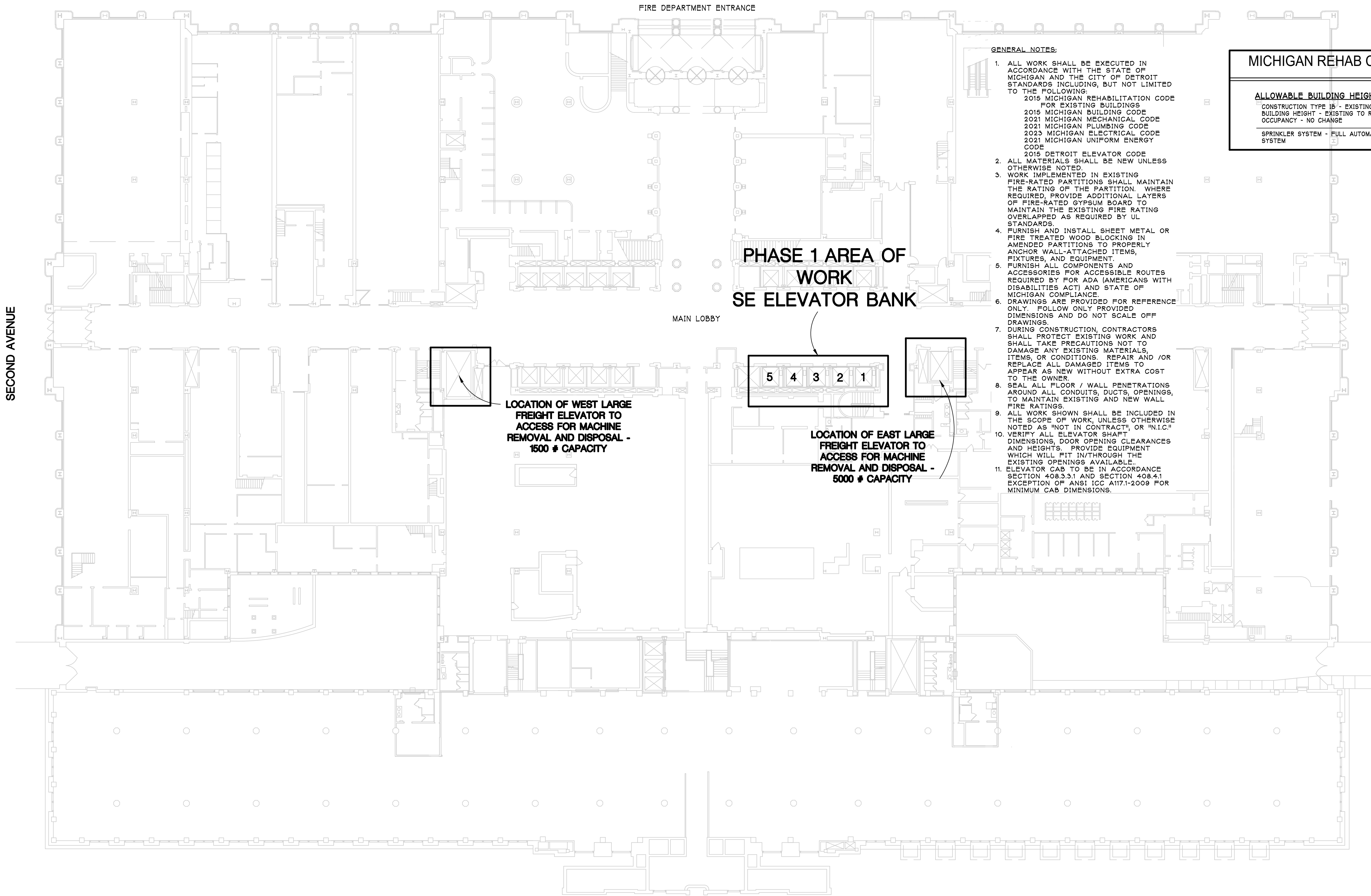
ARCHITECT OF RECORD

HOBBS + BLACK ARCHITECTS
 100 N. STATE ST.
 ANN ARBOR, MI 48104
 PH: (734) 663 - 4189
 FAX: (734) 663 - 1770

ELEVATOR SPECIALIST

LERCH BATES ELEVATOR CONSULTING
 950 BOSTON STREET SE
 GRAND RAPIDS, MI 49507
 PH: (616) 216-2058

WEST GRAND BOULEVARD



EAST MILWAUKEE STREET

**FIRST FLOOR LEVEL
 OVERALL PLAN**
 SCALE - 1" = 20'-0"



GENERAL NOTES:

1. ALL WORK SHALL BE EXECUTED IN ACCORDANCE WITH THE STATE OF MICHIGAN AND THE CITY OF DETROIT STANDARDS INCLUDING, BUT NOT LIMITED TO THE FOLLOWING:
 2015 MICHIGAN REHABILITATION CODE FOR EXISTING BUILDINGS
 2015 MICHIGAN BUILDING CODE
 2021 MICHIGAN MECHANICAL CODE
 2021 MICHIGAN PLUMBING CODE
 2023 MICHIGAN ELECTRICAL CODE
 2021 MICHIGAN UNIFORM ENERGY CODE
 2015 DETROIT ELEVATOR CODE
2. ALL MATERIALS SHALL BE NEW UNLESS OTHERWISE NOTED.
3. WORK IMPLEMENTED IN EXISTING FIRE-RATED PARTITIONS SHALL MAINTAIN THE RATING OF THE PARTITION. WHERE REQUIRED, PROVIDE ADDITIONAL LAYERS OF FIRE-RATED GYPSUM BOARD TO MAINTAIN THE EXISTING FIRE RATING OVERLAPPED AS REQUIRED BY UL STANDARDS.
4. FURNISH AND INSTALL SHEET METAL OR FIRE TREATED WOOD BLOCKING IN AMENDED PARTITIONS TO PROPERLY ANCHOR WALL-ATTACHED ITEMS, FIXTURES, AND EQUIPMENT.
5. FURNISH ALL COMPONENTS AND ACCESSORIES FOR ACCESSIBLE ROUTES REQUIRED BY FOR ADA (AMERICANS WITH DISABILITIES ACT) AND STATE OF MICHIGAN COMPLIANCE.
6. DRAWINGS ARE PROVIDED FOR REFERENCE ONLY. FOLLOW ONLY PROVIDED DIMENSIONS AND DO NOT SCALE OFF DRAWINGS.
7. DURING CONSTRUCTION, CONTRACTORS SHALL PROTECT EXISTING WORK AND SHALL TAKE PRECAUTIONS NOT TO DAMAGE ANY EXISTING MATERIALS, ITEMS, OR CONDITIONS. REPAIR AND /OR REPLACE ALL DAMAGED ITEMS TO APPEAR AS NEW WITHOUT EXTRA COST TO THE OWNER.
8. SEAL ALL FLOOR / WALL PENETRATIONS AROUND ALL CONDUITS, DUCTS, OPENINGS, TO MAINTAIN EXISTING AND NEW WALL FIRE RATINGS.
9. ALL WORK SHOWN SHALL BE INCLUDED IN THE SCOPE OF WORK, UNLESS OTHERWISE NOTED AS NOT IN CONTRACT OR "N.I.C."
10. VERIFY ALL ELEVATOR SHAFT DIMENSIONS, DOOR OPENING CLEARANCES AND HEIGHTS. PROVIDE EQUIPMENT WHICH WILL FIT IN/THROUGH THE EXISTING OPENINGS AVAILABLE.
11. ELEVATOR CAB TO BE IN ACCORDANCE SECTION 408.3.31 AND SECTION 408.4.1 EXCEPTION OF ANSI ICC A117.1-2009 FOR MINIMUM CAB DIMENSIONS.

MICHIGAN REHAB CODE 2015

ALLOWABLE BUILDING HEIGHT & AREA:

- CONSTRUCTION TYPE 1B - EXISTING TO REMAIN
- BUILDING HEIGHT - EXISTING TO REMAIN
- OCCUPANCY - NO CHANGE
- SPRINKLER SYSTEM - FULL AUTOMATIC SPRINKLER SYSTEM

**PHASE 1 AREA OF
 WORK
 SE ELEVATOR BANK**

**LOCATION OF WEST LARGE
 FREIGHT ELEVATOR TO
 ACCESS FOR MACHINE
 REMOVAL AND DISPOSAL -
 1500 # CAPACITY**

**LOCATION OF EAST LARGE
 FREIGHT ELEVATOR TO
 ACCESS FOR MACHINE
 REMOVAL AND DISPOSAL -
 5000 # CAPACITY**

BIDS	6/18/2024
90% REVIEW SET	3/30/2023
	DATE ISSUED
	DRAWN BY
	CHECKED BY

**HOBBS + BLACK
 ARCHITECTS**
 100 N. State St.
 Ann Arbor, MI 48104
 P: 734.663.4189
 www.hobbs-black.com

STATE OF MICHIGAN
 DEPARTMENT OF TECHNOLOGY, MANAGEMENT AND BUDGET
 STATE FACILITIES ADMINISTRATION
DESIGN AND CONSTRUCTION DIVISION
 ADAM P. LACH, R.A. DIRECTOR
 CADILLAC PLACE ELEVATORS UPGRADES - PHASE 1
 3044 W. GRAND BLVD. DETROIT, MI. 48202
 SOM File No. 171/21275.MNB

MATRIX
 CONSULTING ENGINEERS, INC.
 1601 E César E. Chávez Ave
 Lansing, MI 48906

Lerch Bates
 BUILDING INSIGHT
 950 Boston Street SE Grand
 Rapids MI 49507
 CONSULTANT

**FIRST LEVEL
 OVERALL PLAN
 & NOTES**

SHEET TITLE
21323
PROJECT NUMBER
A-050
SHEET NUMBER

Drawings: P:\2023\12\1223\Drawings\CD\Arch\050514\A050.dwg
 Date: Jun 18, 2024, 11:07am Layout: A-050 Plotted by: strajkova

BIDS	6/18/2024
90X REVIEW SET	9/1/2023
90X REVIEW SET	3/30/2023
PHASE 100 & 200	4/6/22
DATE ISSUED	

DRAWN BY
 CHECKED BY

HOBBS + BLACK
 ARCHITECTS
 100 N. State St.
 Ann Arbor, MI 48104
 P: 734.663.4189
 www.hobbs-black.com

STATE OF MICHIGAN
 DEPARTMENT OF TECHNOLOGY, MANAGEMENT AND BUDGET
 STATE FACILITIES ADMINISTRATION
 DESIGN AND CONSTRUCTION DIVISION
 ADAM P. LACH, R.A. DIRECTOR
 CADILLAC PLACE ELEVATORS UPGRADES - PHASE 1
 3044 W. GRAND BLVD. DETROIT, MI. 48202
 SOM File No. 171/21275.MNB
 PROJECT

MATRIX
 CONSULTING ENGINEERS, INC.
 1601 E César E. Chávez Ave
 Lansing, MI 48906

Lerch Bates
 BUILDING INSIGHT
 950 Boston Street SE Grand
 Rapids MI 49507
 CONSULTANT

SE BANK
 FLOOR PLANS

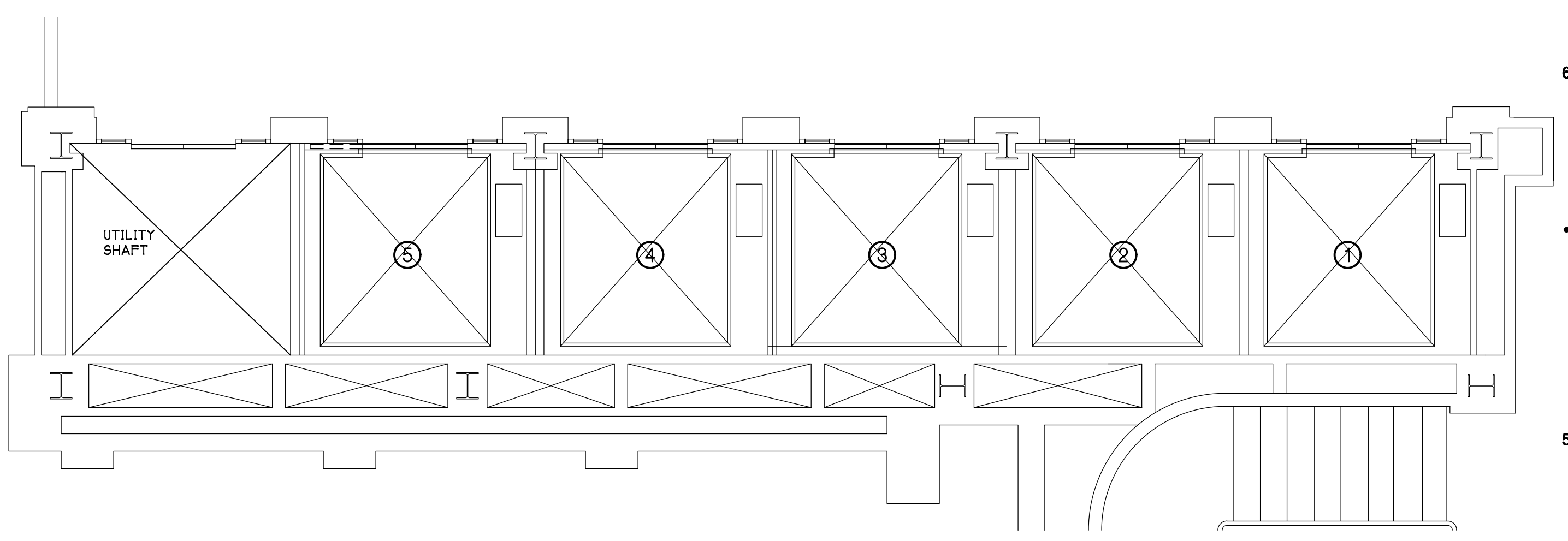
SHEET TITLE

21323

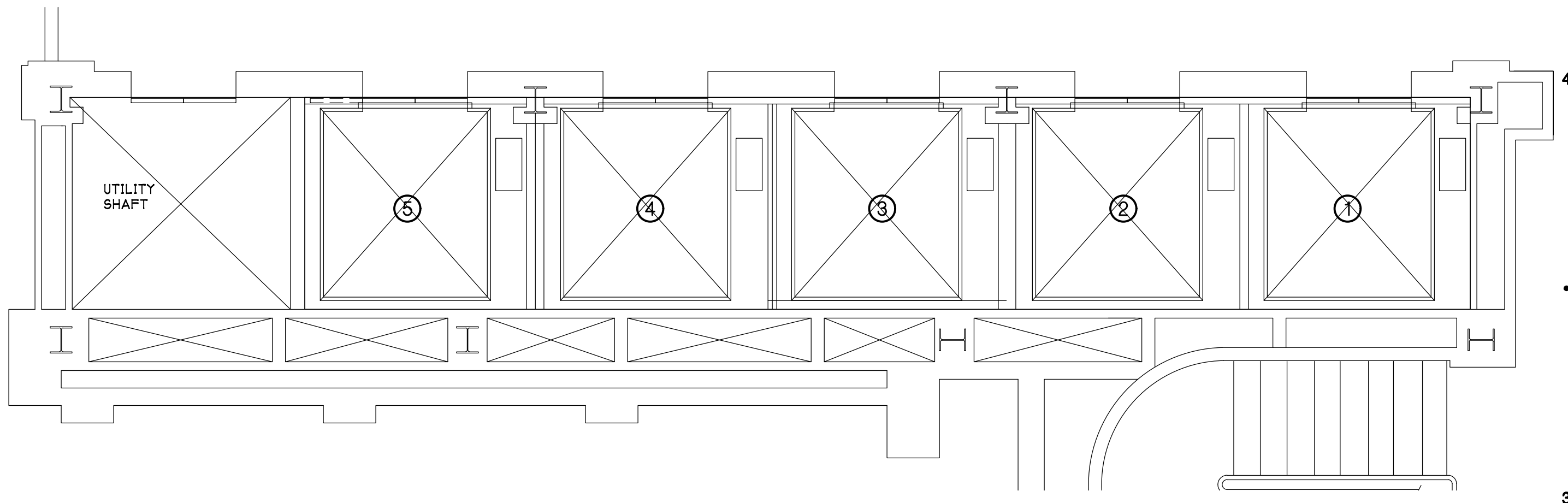
PROJECT NUMBER

A-100

SHEET NUMBER



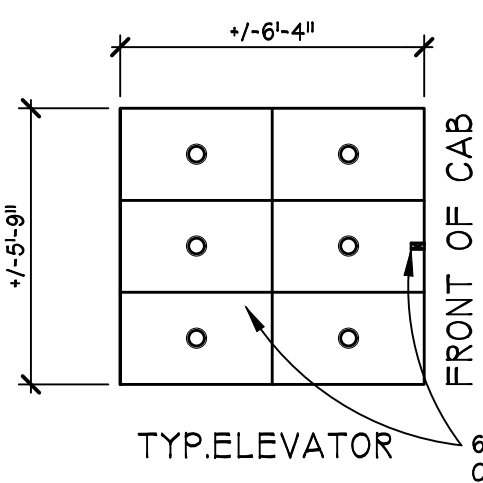
SE ELEVATOR BANK 1, 2, 3, 4 & 5
FLOOR PLAN @ FLOORS 2 - 15
 SCALE - 1/4" = 1'-0"
 NORTH



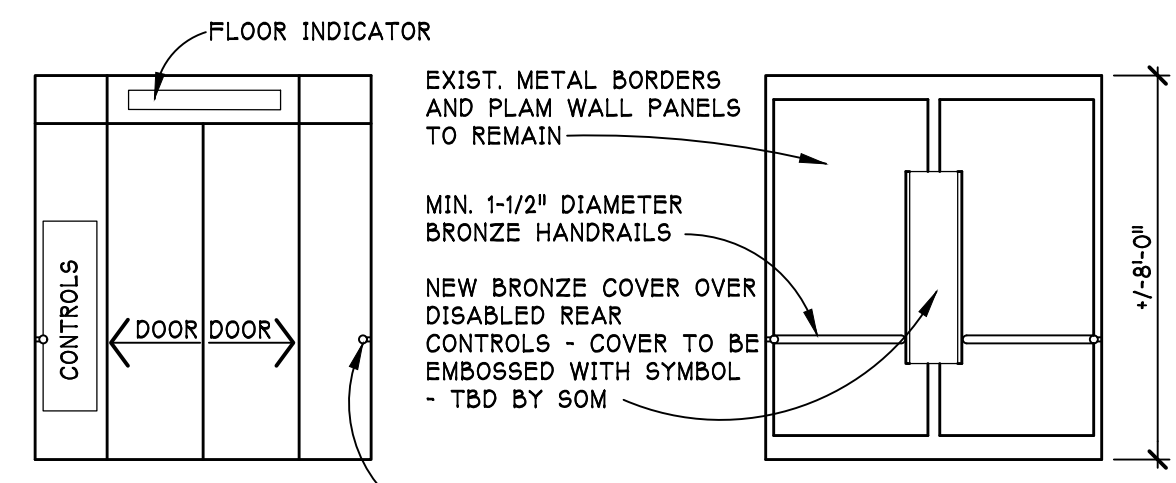
SE ELEVATOR BANK 1, 2, 3, 4 & 5
FIRST FLOOR PLAN
 SCALE - 1/4" = 1'-0"
 NORTH

NOTE: ELEVATOR MODERNIZATION SCOPE
 SEE SPECIFICATION SECTION 142200 IN THE PROJECT MANUAL FOR THE ENTIRE WORK SCOPE OF THE ELEVATOR MODERNIZATION.

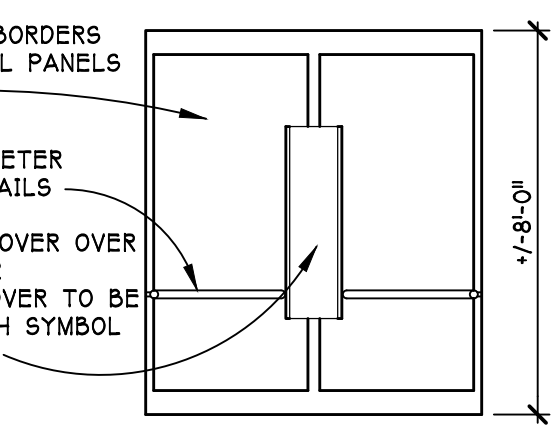
BUILDING WORK SCOPE IS DETAILED ON THESE DRAWINGS AND ASSOCIATED TECHNICAL SPECIFICATION SECTIONS IN THE PROJECT MANUAL.



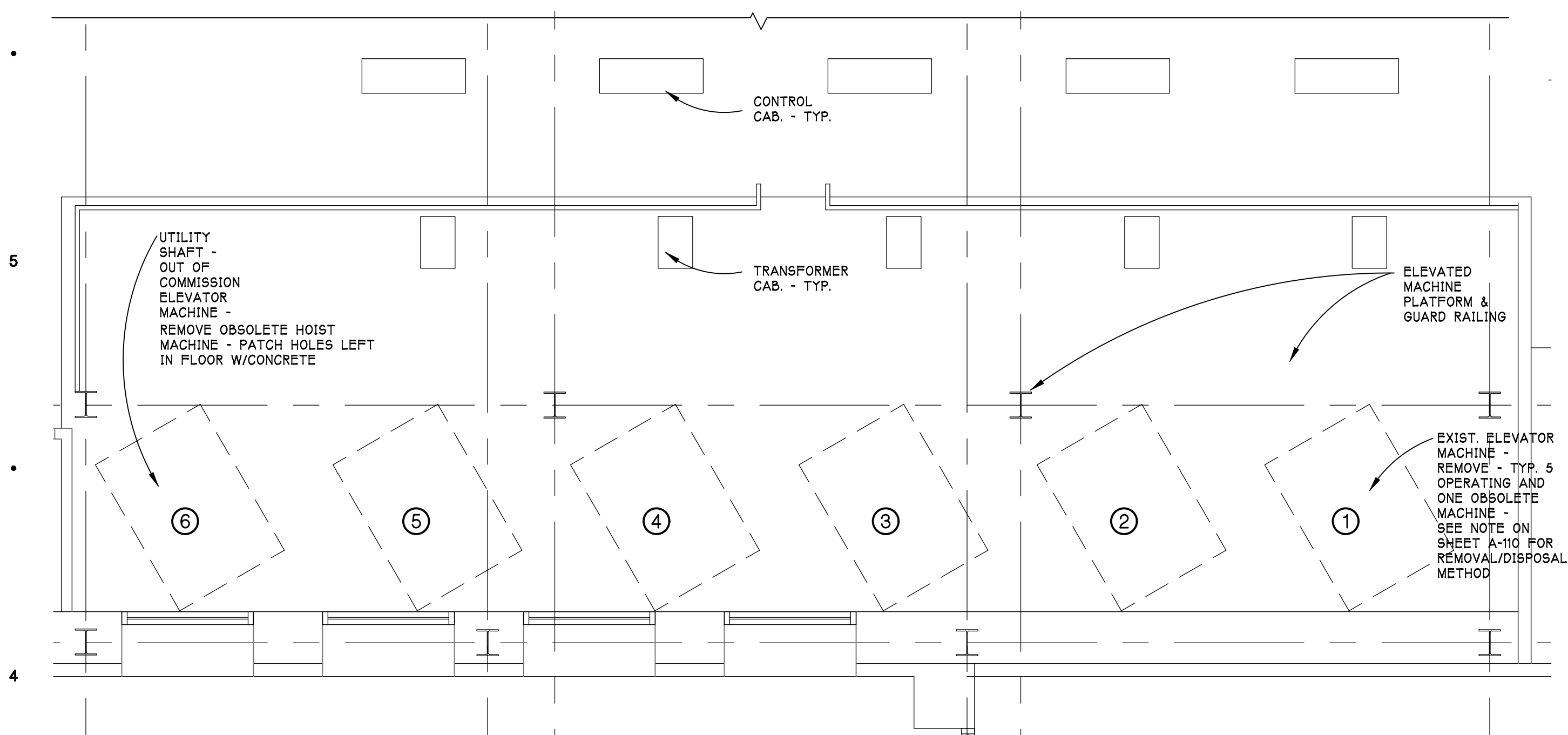
TYP. REFLECTED CLG. PLAN
 SCALE - 1/4" = 1'-0"



TYP. CAB INTERIOR DOOR WALL
 SCALE - 1/4" = 1'-0"



TYP. REAR CAB WALL
 SCALE - 1/4" = 1'-0"



SE ELEVATOR BANK 1, 2, 3, 4 & 5
PARTIAL PENTHOUSE PLAN (FLOOR 16)
 SCALE - 1/4" = 1'-0"
 NORTH

REMOVE 6 EXISTING ELEVATOR MACHINES AND ASSOCIATED EQUIPMENT AND PREPARE FOR 5 NEW MACHINES - BREAK-DOWN THE MACHINES INTO PIECES SMALL AND LIGHT-WEIGHT ENOUGH TO HOIST DOWN THROUGH THE FLOOR HATCH IN THE CENTER OF THE ROOM TO THE FLOOR BELOW AND ACCESS THE LARGE FREIGHT ELEVATOR TO TAKE PIECES DOWN TO THE STREET LEVEL FOR DISPOSAL. KEEPING IN MIND THAT THE EXISTING CABS ETC. WILL REMAIN AND BE RE-USED.
 SEE SHEET A-050 FOR LOCATION OF FREIGHT ELEVATOR FOR USE REMOVING EXISTING MACHINES



SE ELEVATOR BANK 1, 2, 3, 4 & 5
SUB - BASEMENT - PIT PLAN
 SCALE - 1/4" = 1'-0"
 NORTH

REMOVE A +/- 4' X 4' SECTION OF THE CONCRETE FLOOR FOR SANITARY TIE IN TO EXIST. SEWAGE INJECTOR. COORDINATE EXACT LOCATION WITH PLUMBER. PATCH FLOOR AFTER HOOK UP WITH 6" CONC. SLAB

REMOVE A +/- 4' X 4' SECTION OF THE CONCRETE PIT FLOOR FOR SUMP PIT INSTALLATION. COORDINATE SIZE AND LOCATION OF THE CUTOUT. PATCH FLOOR AROUND SUMP PIT WITH 6" CONC. SLAB

Drawings: P:\2023\132323\Drawings\CD\A-100\A-100.dwg
 Date: Jun 18, 2024, 11:08am
 Plotted by: strajkovic

BIDS	6/18/2024
90X REVIEW SET	9/1/2023
90X REVIEW SET	3/30/2023
DATE ISSUED	

DRAWN BY
 CHECKED BY

HOBBS + BLACK
 ARCHITECTS

100 N. State St.
 Ann Arbor, MI 48104
 P: 734.663.4189
 www.hobbs-black.com

STATE OF MICHIGAN
 DEPARTMENT OF TECHNOLOGY, MANAGEMENT AND BUDGET
 STATE FACILITIES ADMINISTRATION
 DESIGN AND CONSTRUCTION DIVISION
 ADAM P. LACH, R.A. DIRECTOR

CADILLAC PLACE ELEVATORS UPGRADES - PHASE 1
 3044 W. GRAND BLVD. DETROIT, MI. 48202
 SOM File No. 171/21275.MNB

PROJECT

MATRIX
 CONSULTING ENGINEERS, INC.

1601 E César E. Chávez Ave
 Lansing, MI 48906

Lerch Bates
 BUILDING INSIGHT

950 Boston Street SE Grand
 Rapids MI 49507

CONSULTANT

ELEVATOR PENTHOUSE FLOOR PLAN & ROOF PLAN

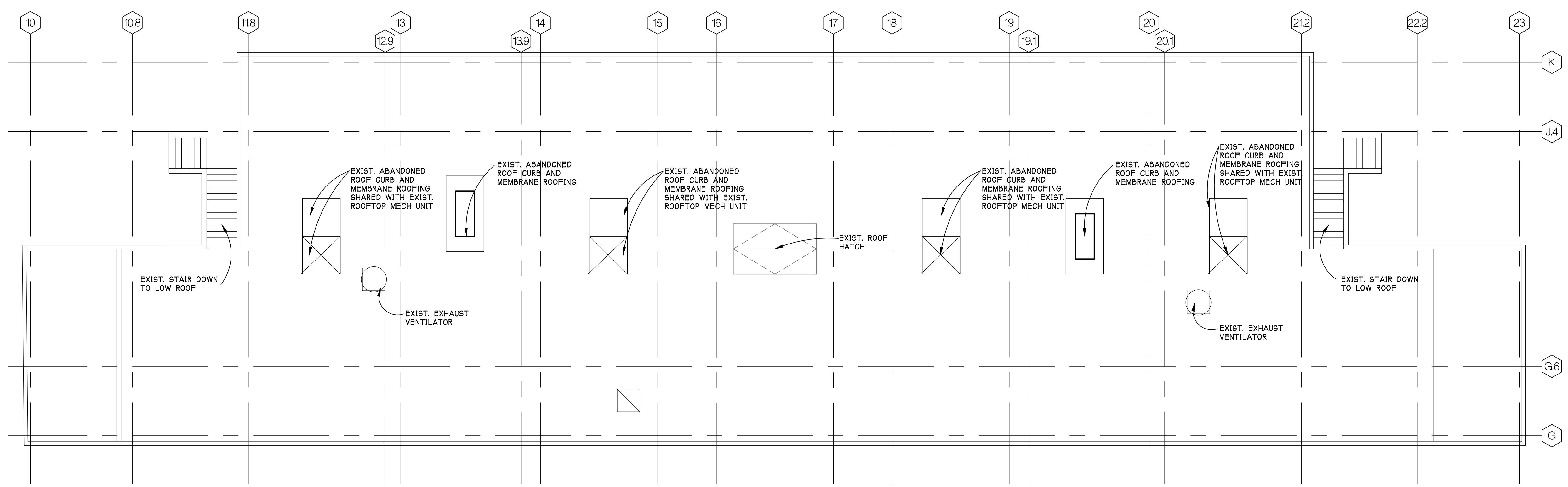
SHEET TITLE

21323

PROJECT NUMBER

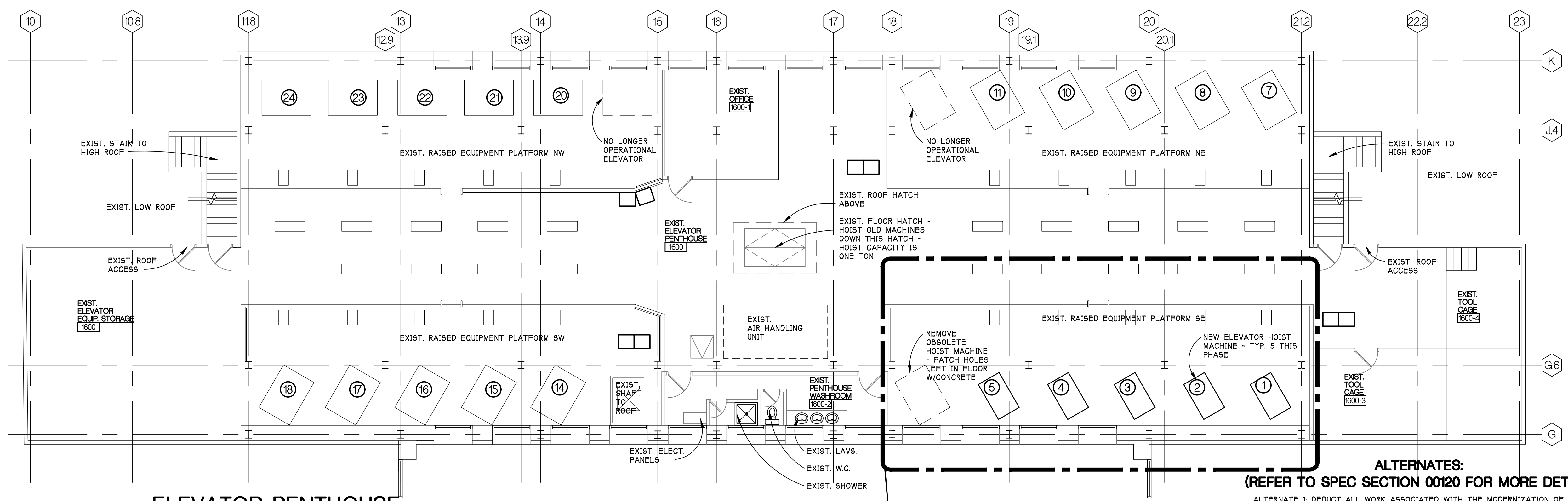
A-110

SHEET NUMBER



ELEVATOR PENTHOUSE ROOF PLAN (HIGH ROOF)
 SCALE - 1/8" = 1'-0"
 NORTH
 G4
 A-110

NOTE:
 OTHER EQUIPMENT IS LOCATED ON THE ROOF BUT WE ARE ONLY SHOWING THE EQUIPMENT WHICH IS RELEVANT TO THIS PARTICULAR PROJECT



ELEVATOR PENTHOUSE FLOOR PLAN (16TH LVL)
 SCALE - 1/8" = 1'-0"
 NORTH
 G1
 A-110

PHASE 1 AREA OF ELEVATOR MODERNIZATION WORK SE ELEVATOR BANK

REMOVE 6 EXISTING ELEVATOR MACHINES AND ASSOCIATED EQUIPMENT AND PREPARE FOR 5 NEW MACHINES - BREAK-DOWN THE MACHINES INTO PIECES SMALL AND LIGHT-WEIGHT ENOUGH TO HOIST DOWN THROUGH THE FLOOR HATCH IN THE CENTER OF THE ROOM TO THE FLOOR BELOW AND ACCESS THE LARGE FREIGHT ELEVATOR TO TAKE PIECES DOWN TO THE STREET LEVEL FOR DISPOSAL. KEEPING IN MIND THAT THE EXISTING CABS ETC. WILL REMAIN AND BE RE-USED.

SEE SHEET A-050 FOR LOCATION OF FREIGHT ELEVATORS FOR USE REMOVING EXISTING MACHINES

ALTERNATES:
 (REFER TO SPEC SECTION 00120 FOR MORE DETAIL)

- ALTERNATE 1: DEDUCT ALL WORK ASSOCIATED WITH THE MODERNIZATION OF ONE ELEVATOR. ELEVATOR NUMBER - TBD.
- ALTERNATE 2: DEDUCT ALL WORK ASSOCIATED WITH THE MODERNIZATION OF ANOTHER ELEVATOR. ELEVATOR NUMBER - TBD.
- ALTERNATE 3: DEDUCT ALL WORK ASSOCIATED WITH THE MODERNIZATION OF ANOTHER ELEVATOR. ELEVATOR NUMBER - TBD.
- ALTERNATE 4: DEDUCT ALL WORK ASSOCIATED WITH THE MODERNIZATION OF ANOTHER ELEVATOR. ELEVATOR NUMBER - TBD.
- ALTERNATE 5: DEDUCT ALL WORK ASSOCIATED WITH THE MODERNIZATION OF ANOTHER ELEVATOR (NO ELEVATORS BEING MODERNIZED) INCLUDING ALL PLUMBING AND ELECTRICAL WORK SCOPES IN THE PIT ASSOCIATED WITH THE ELEVATOR MODERNIZATION.

Drawings: P:\2022\12\12\23\Drawings\CD\Architect\05\SHA1\10_4.dwg
 Date: Jun 18, 2024, 11:09am Layout: A-110 Plotted by: srirajkova

BIDS	6/18/2024
90% REVIEW SET	3/30/2023
	DATE ISSUED
	DRAWN BY
	CHECKED BY

HOBBS + BLACK
ARCHITECTS

100 N. State St.
 Ann Arbor, MI 48104
 P: 734.663.4189
 www.hobbs-black.com

STATE OF MICHIGAN
 DEPARTMENT OF TECHNOLOGY, MANAGEMENT AND BUDGET
 STATE FACILITIES ADMINISTRATION
 DESIGN AND CONSTRUCTION DIVISION
 ADAM P. LACH, R.A., DIRECTOR

CADILLAC PLACE ELEVATORS UPGRADES - PHASE 1
 3044 W. GRAND BLVD. DETROIT, MI. 48202
 SOM File No. 171/21275.MNB

PROJECT

MATRIX
 CONSULTING ENGINEERS, INC.

1601 E César E. Chávez Ave
 Lansing, MI 48906

Lerch Bates
 BUILDING INSIGHT

950 Boston Street SE Grand
 Rapids MI 49507

CONSULTANT

HOISTWAY SECTION

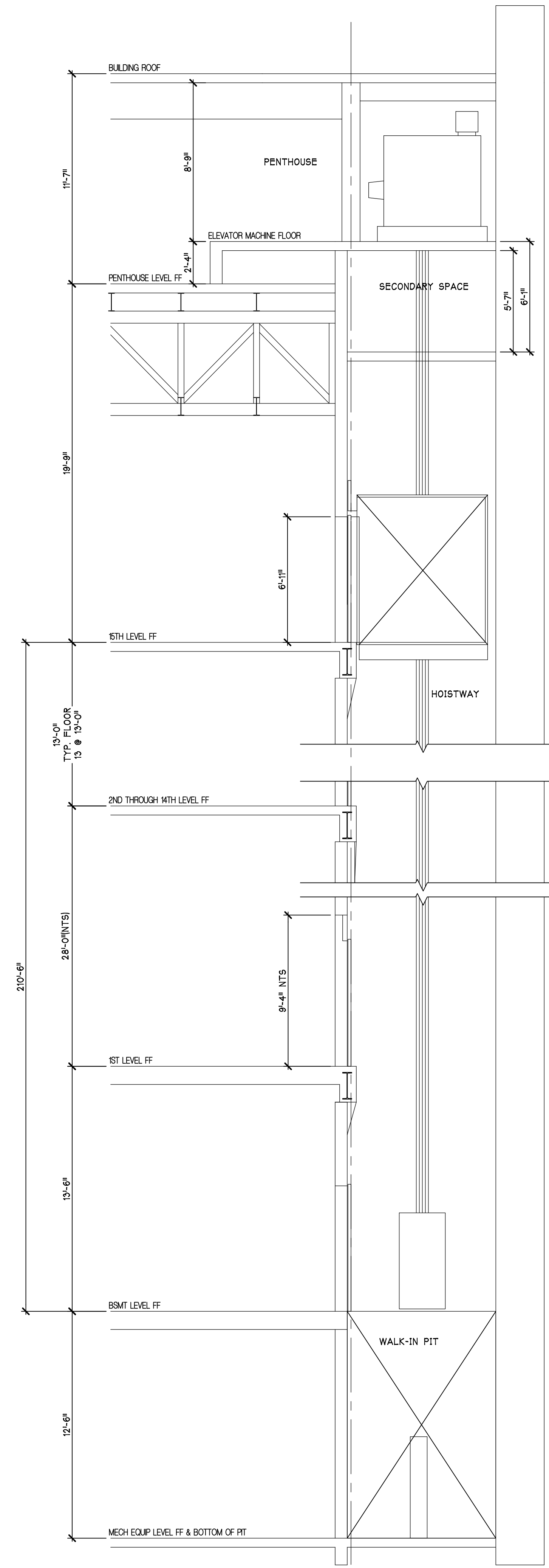
SHEET TITLE

21323

PROJECT NUMBER

A-300

SHEET NUMBER



TYPICAL ELEVATOR HOISTWAY SECTION
 SCALE - 1/4" = 1'-0"
 09/48/001

Drawings: P:\2023\12\21323\Drawings\CD\A300\A300.dwg
 Date: Jun 18, 2024, 11:09am
 Layout: A-300
 Plotted by: sirajkovska

BIDS 6/18/2024
 DATE ISSUED

DRAWN BY
STS
 CHECKED BY
CAT

HOBBS + BLACK
ARCHITECTS
 100 N. State St.
 Ann Arbor, MI 48104
 P: 734-663-4189
 www.hobbs-black.com

STATE OF MICHIGAN
 DEPARTMENT OF TECHNOLOGY, MANAGEMENT AND BUDGET
 STATE FACILITIES ADMINISTRATION
 DESIGN AND CONSTRUCTION DIVISION
 ADAM P. LACH, RA, DIRECTOR
 CADILLAC PLACE ELEVATORS UPGRADES - PHASE 1
 3044 W. GRAND BLVD. DETROIT, MI 48202
 SDM File No. 171/21275.MNB

MATRIX
 CONSULTING ENGINEERS, INC.
 1601 E César E. Chávez Ave
 Lansing, MI 48906

Lerch Bates
 BUILDING INSIGHT
 950 Boston Street SE Grand
 Rapids MI 49507
 CONSULTANT

**ROOF
 PLAN -
 MECHANICAL
 DEMOLITION**

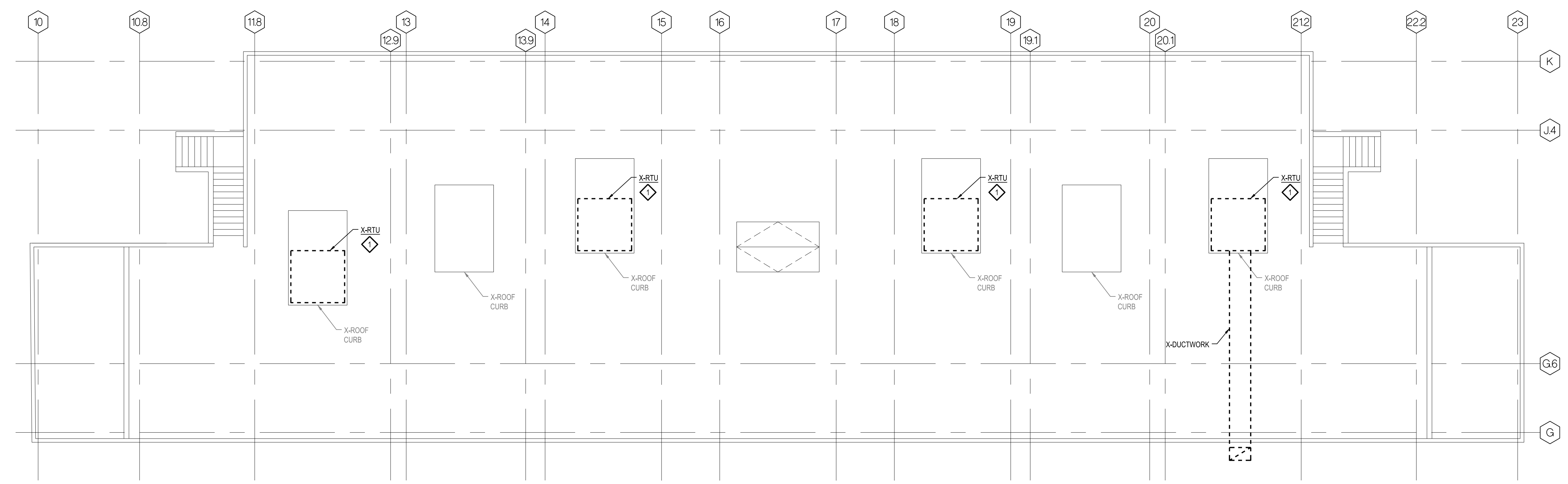
SHEET TITLE

21323

PROJECT NUMBER

M-300

SHEET NUMBER



ROOF PLAN - MECHANICAL DEMOLITION
 SCALE: 1/8" = 1'-0"

DEMOLITION NOTES
 ✦ DISCONNECT, REMOVE, AND DEMO EXISTING ROOF TOP UNIT, DEMO ASSOCIATED SUPPLY AND RETURN DUCTWORK IN ITS ENTIRETY, DEMO ALL ASSOCIATED ACCESSORIES, PATCH AND SEAL ROOF WATER TIGHT TO MATCH EXISTING. EXISTING ROOF CURB TO REMAIN.

BIDS 6/18/2024
 DATE ISSUED

DRAWN BY
STS
 CHECKED BY
CAT

HOBBS + BLACK
ARCHITECTS
 100 N. State St.
 Ann Arbor, MI 48104
 P: 734.663.4189
 www.hobbs-black.com

STATE OF MICHIGAN
 DEPARTMENT OF TECHNOLOGY, MANAGEMENT AND BUDGET
 STATE FACILITIES ADMINISTRATION
 DESIGN AND CONSTRUCTION DIVISION
 ADAM P. LACH, RA, DIRECTOR
 CADILLAC PLACE ELEVATORS UPGRADES - PHASE 1
 3044 W. GRAND BLVD. DETROIT, MI 48202
 SDM File No. 171/21275.MNB

MATRIX
 CONSULTING ENGINEERS, INC.
 1601 E César E. Chávez Ave
 Lansing, MI 48906

Lerch Bates
 BUILDING INSIGHT
 950 Boston Street SE Grand
 Rapids MI 49507
 CONSULTANT

**PENTHOUSE
 FLOOR PLAN -
 MECHANICAL
 NEW**

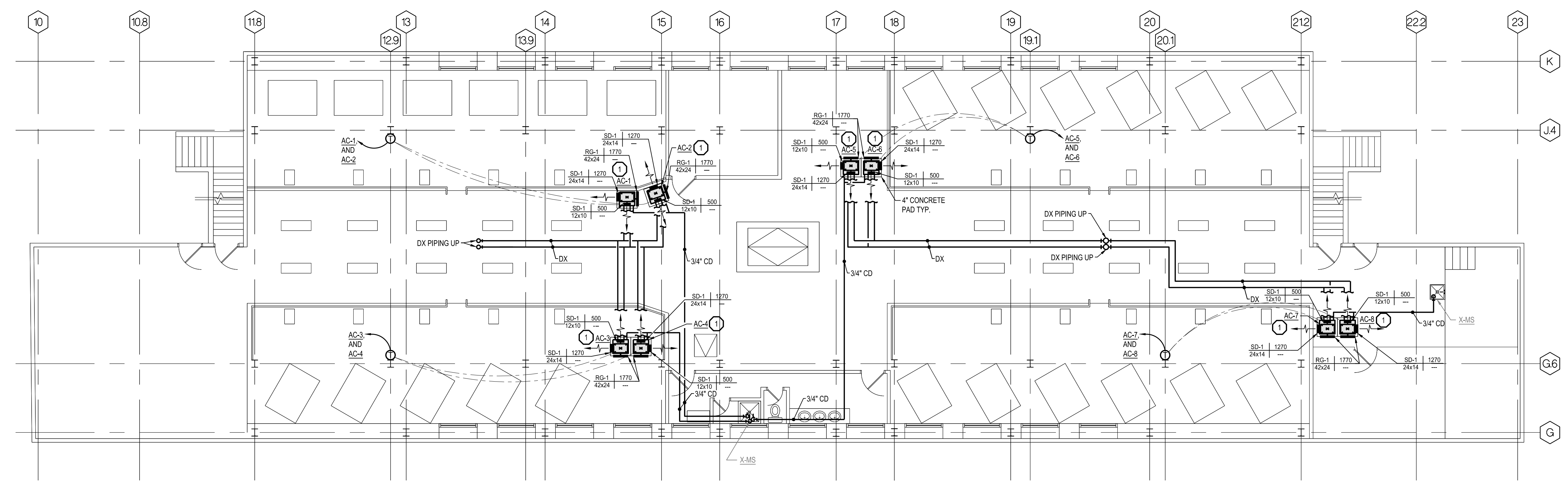
SHEET TITLE

21323

PROJECT NUMBER

M-400

SHEET NUMBER



PENTHOUSE FLOOR PLAN - MECHANICAL NEW
 SCALE: 1/8" = 1'-0"

MECHANICAL KEY NOTES

- 1. INSTALL AIR CONDITIONING UNIT AT LOCATION SHOWN. ROUTE DX PIPING TO ASSOCIATED CONDENSING UNIT ON ROOF. ROUTE ASSOCIATED CONDENSATE PIPING TO NEAREST MOP SINK.

BIDS 6/18/2024
 DATE ISSUED

DRAWN BY
STS
 CHECKED BY
CAT

HOBBS + BLACK
ARCHITECTS
 100 N. State St.
 Ann Arbor, MI 48104
 P: 734.663.4189
 www.hobbs-black.com

STATE OF MICHIGAN
 DEPARTMENT OF TECHNOLOGY, MANAGEMENT AND BUDGET
 STATE FACILITIES ADMINISTRATION
DESIGN AND CONSTRUCTION DIVISION
 ADAM P. LACH, RA, DIRECTOR
 CADILLAC PLACE ELEVATORS UPGRADES - PHASE 1
 3044 W. GRAND BLVD. DETROIT, MI 48202
 SDM File No. 171/21275.MNB

MATRIX
 CONSULTING ENGINEERS, INC.
 1601 E César E. Chávez Ave
 Lansing, MI 48906

Lerch Bates
 BUILDING INSIGHT
 950 Boston Street SE Grand
 Rapids MI 49507
 CONSULTANT

**ROOF
 PLAN -
 MECHANICAL
 NEW**

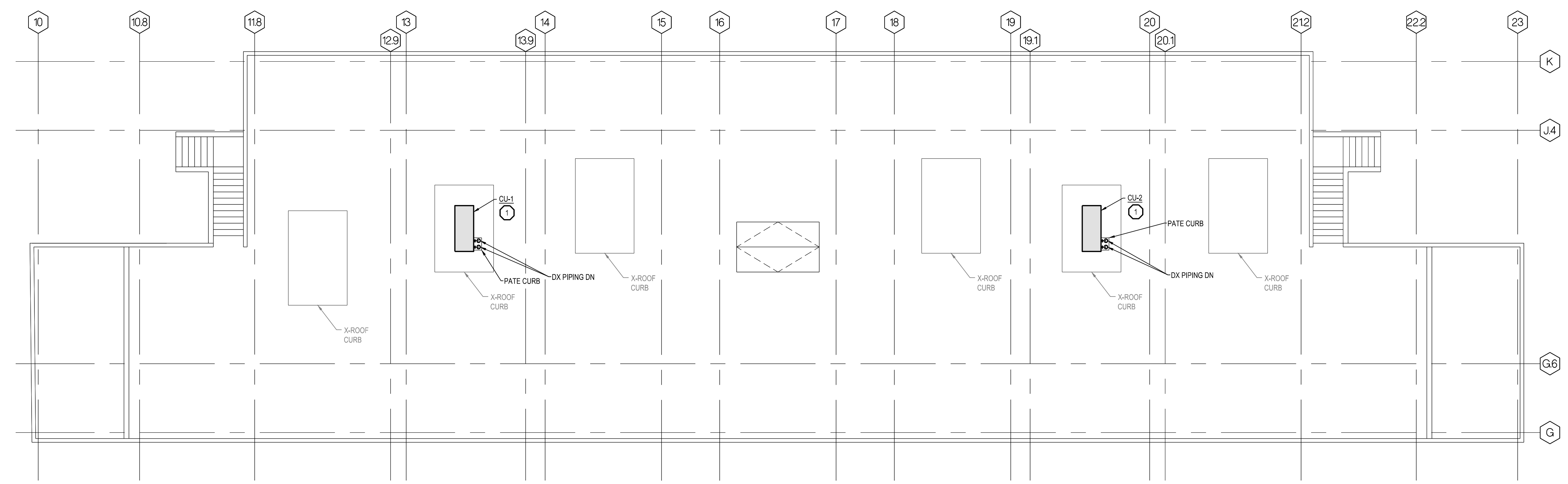
SHEET TITLE

21323

PROJECT NUMBER

M-401

SHEET NUMBER



ROOF PLAN - MECHANICAL NEW
 SCALE: 1/8" = 1'-0"

MECHANICAL KEY NOTES

- 1. INSTALL CONDENSING UNIT ON MIRO MODEL HD PRE-ENGINEERED HD RAIL EQUIPMENT SUPPORT AT LOCATION SHOWN. THE SUPPORT STAND SHALL LIMIT LOADING ON ROOF TO 3PSF, 18" HEIGHT OFF ROOF, OR APPROVED EQUAL. ROUTE DX PIPING TO ASSOCIATED AIR CONDITIONING UNITS IN PENTHOUSE. SEAL DX PIPING ROOF PENETRATIONS WATER TIGHT. CONTRACTOR SHALL ENSURE PROPER CLEARANCES FOR DEFROST DRAINAGE. DEFROST DRAINAGE SHALL DRAIN FREELY TO ROOF DRAIN. CONTRACTOR SHALL INSTALL 4 WIND STRAPS AND ENSURE STRUCTURAL INTEGRITY OF THE EXISTING CURB CAN SUPPORT THE UNIT AND STAND.

BIDS 6/18/2024
 DATE ISSUED

DRAWN BY
STS
 CHECKED BY
CAT

HOBBS + BLACK
ARCHITECTS

100 N. State St.
 Ann Arbor, MI 48104
 P: 734.663.4189
 www.hobbs-black.com

STATE OF MICHIGAN
 DEPARTMENT OF TECHNOLOGY, MANAGEMENT AND BUDGET
 STATE FACILITIES ADMINISTRATION
 DESIGN AND CONSTRUCTION DIVISION
 ADAM P. LACH, RA, DIRECTOR

CADILLAC PLACE ELEVATORS UPGRADES - PHASE 1
 3044 W. GRAND BLVD. DETROIT, MI. 48202
 SDM File No. 171/21275.MNB

MATRIX
 CONSULTING ENGINEERS, INC.
 1601 E César E. Chávez Ave
 Lansing, MI 48906

Lerch Bates
 BUILDING INSIGHT
 950 Boston Street SE Grand
 Rapids MI 49507
 CONSULTANT

SUB BASEMENT FLOOR PLAN - PLUMBING DEMOLITION

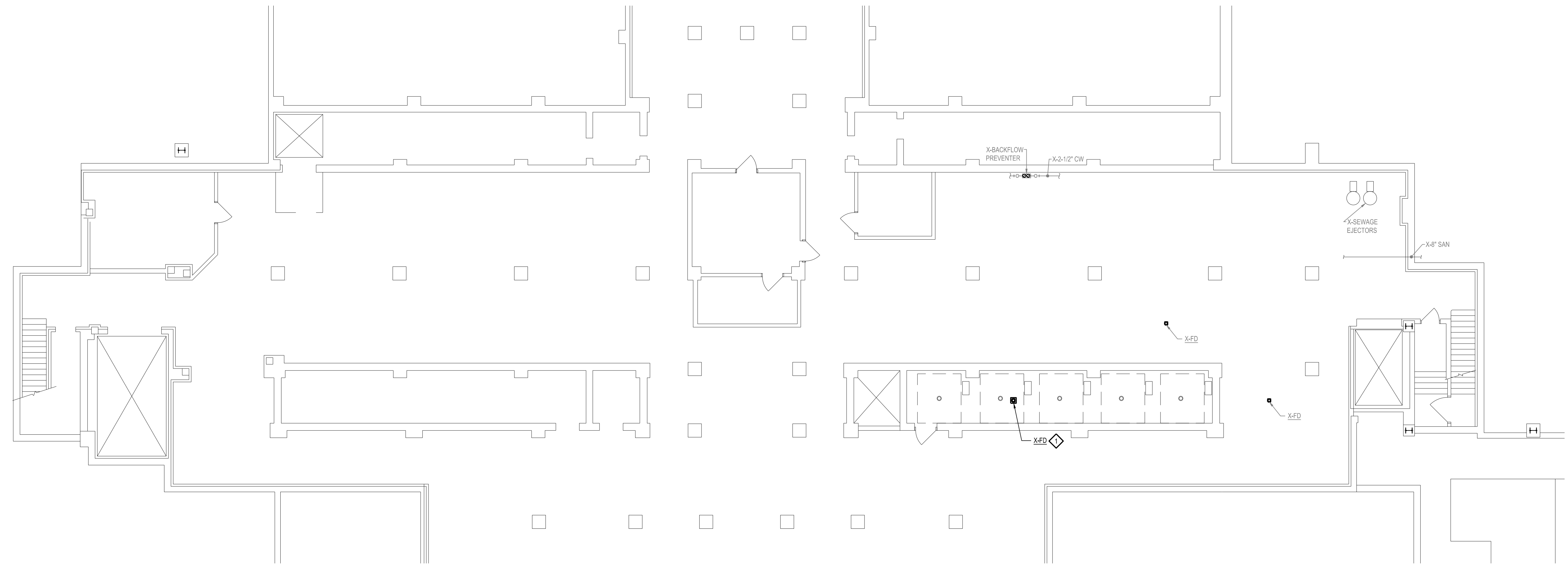
SHEET TITLE

21323

PROJECT NUMBER

P-300

SHEET NUMBER



DEMOLITION NOTES

◇ DISCONNECT, REMOVE, AND DEMO EXISTING FLOOR DRAIN, DEMO ASSOCIATED SANITARY PIPING AS REQUIRED FOR NEW SUMP PUMP PIT AND CAP SANITARY PIPING.

SUB BASEMENT FLOOR PLAN - PLUMBING DEMOLITION
 SCALE 1/8" = 1'-0"

H
G
F
E
D
C
B
A

6
5
4
3
2
1

BIDS 6/18/2024
 DATE ISSUED

DRAWN BY
STS
 CHECKED BY
CAT

HOBBS + BLACK
ARCHITECTS
 100 N. State St.
 Ann Arbor, MI 48104
 P: 734.663.4189
 www.hobbs-black.com

STATE OF MICHIGAN
 DEPARTMENT OF TECHNOLOGY, MANAGEMENT AND BUDGET
 STATE FACILITIES ADMINISTRATION
DESIGN AND CONSTRUCTION DIVISION
 ADAM P. LACH, RA, DIRECTOR
 CADILLAC PLACE ELEVATORS UPGRADES - PHASE 1
 3044 W. GRAND BLVD. DETROIT, MI. 48202
 SDM File No. 171/21275.MNB

MATRIX
 CONSULTING ENGINEERS, INC.
 1601 E César E. Chávez Ave
 Lansing, MI 48906

Lerch Bates
 BUILDING INSIGHT
 950 Boston Street SE Grand
 Rapids MI 49507
 CONSULTANT

SUB BASEMENT FLOOR PLAN - PLUMBING NEW

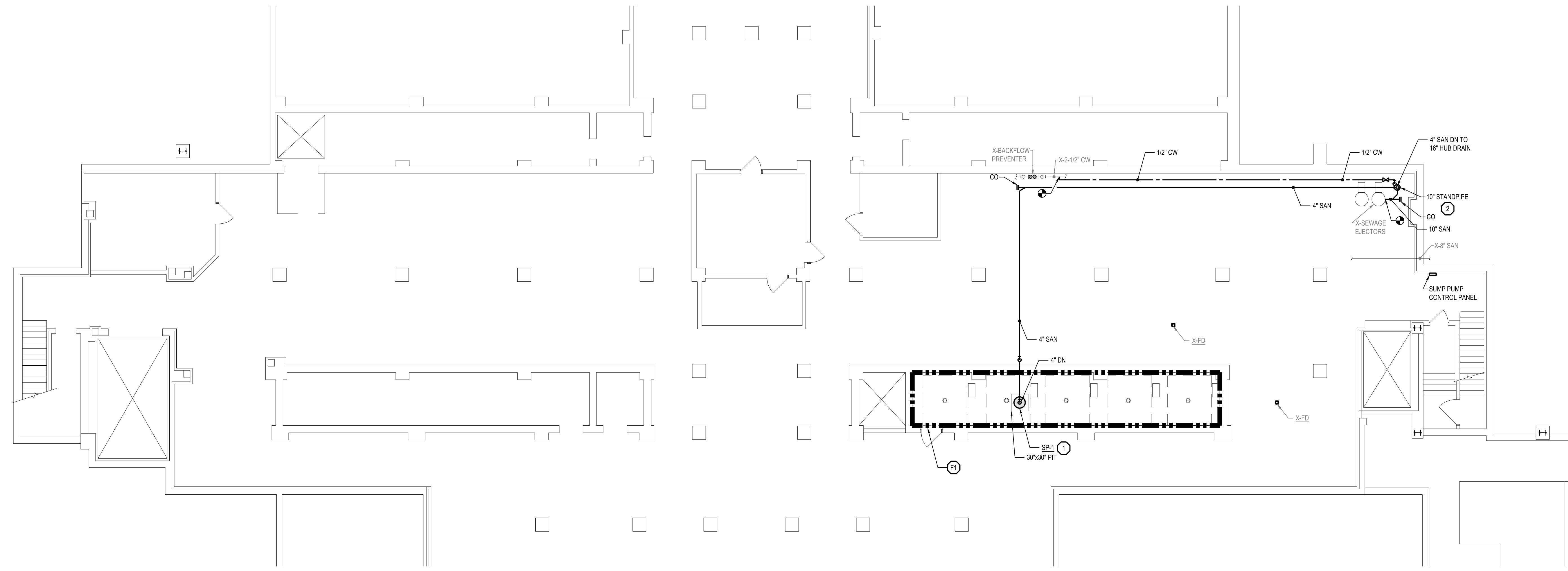
SHEET TITLE

21323

PROJECT NUMBER

P-400

SHEET NUMBER



PLUMBING KEY NOTES

- ① INSTALL SUMP PUMP AT LOCATION SHOWN. ROUTE SANITARY PIPING AS SHOWN TO DROP DOWN TO HUB DRAIN STANDPIPE.
- ② ROUTE SANITARY PIPING FROM STAND PIPE TO TIE INTO EXISTING SEWAGE EJECTOR UNDERGROUND. SEE SHEET P-100 FOR MORE DETAIL.

FIRE PROTECTION KEY NOTES

- F1 MODIFY ASSOCIATED SPRINKLER PIPING AND SPRINKLER HEADS IN ELEVATOR SHAFT PER NFPA 13 TO MEET CODE. COORDINATE FIRE PROTECTION MODIFICATIONS WITH OTHER TRADES.

SUB BASEMENT FLOOR PLAN - PLUMBING NEW
 SCALE 1/8" = 1'-0"

ELECTRICAL SYMBOLS LEGEND

<p>OUTLETS</p> <ul style="list-style-type: none"> ⊕ SINGLE RECEPTACLE (120 VOLT) ⊕ DUPLEX RECEPTACLE ⊕ EMERGENCY RECEPTACLE ⊕ DOUBLE DUPLEX RECEPTACLE ⊕ F FLUSH FLOOR BOX ⊕ S SURFACE FLOOR BOX ⊕ SPECIAL EQUIPMENT RECEPTACLE ⊕ TELEPHONE OUTLET ▽ DATA OUTLET ▽ TELEPHONE / DATA OUTLET ■ PP POWER POLE ⊕ JUNCTION BOX ⊕ WALL JUNCTION BOX ⊕ PULL (JUNCTION) BOX ⊕ UNDERFLOOR JUNCTION BOX ⊕ CEILING MOUNTED WIFI <p>SWITCHES</p> <ul style="list-style-type: none"> ⊕ SINGLE-POLE SWITCH ⊕ THREE-WAY SWITCH ⊕ FOUR-WAY SWITCH ⊕ SWITCH WITH PILOT LIGHT ⊕ THERMAL OVERLOAD SWITCH ⊕ MANUAL MOTOR SWITCH ⊕ KEY SWITCH ⊕ TIME SWITCH ⊕ DIMMER SWITCH <p>MECHANICAL</p> <ul style="list-style-type: none"> ⊕ SINGLE PHASE MOTOR ⊕ THREE PHASE MOTOR ⊕ RESISTANCE HEATER, KW SHOWN ⊕ PIPE TRACE HEATER ⊕ ELECTRIC UNIT HEATER ⊕ ELECTRIC WATER HEATER <p>DESIGNATIONS</p> <ul style="list-style-type: none"> ⊕ DEMOLITION NOTE ⊕ PLAN NOTE ⊕ ADDENDUM NOTE 	<p>FIXTURES</p> <ul style="list-style-type: none"> ⊕ LIGHT FIXTURE ⊕ STRIP FIXTURE ⊕ EMERGENCY LIGHT FIXTURE ⊕ IN-GRADE LIGHT FIXTURE ⊕ SPOTLIGHT (number of heads shown) ⊕ EXIT SIGN (face & direction as shown) ⊕ WALL MOUNT LIGHT FIXTURE ⊕ CEILING LIGHT FIXTURE ⊕ TRACK & FIXTURE ⊕ STREET TYPE POLE FIXTURE ⊕ POLE MOUNTED LIGHT FIXTURE ⊕ EXTERIOR WALL MOUNT LIGHT FIXTURE ⊕ WALLPACK LIGHT FIXTURE ⊕ SPECIAL PURPOSE LIGHT FIXTURE ⊕ HIGH BAY LIGHT FIXTURE ⊕ EMERGENCY EGRESS LIGHT FIXTURE (number of heads shown) ⊕ DOCK LIGHT FIXTURE <p>CIRCUITRY and RACEWAYS</p> <ul style="list-style-type: none"> — CONDUIT INSTALLED (by E.C.) --- CONDUIT INSTALLED (by others) — CONDUIT STUB UP — CONDUIT STUB DOWN 1.3 HOME RUN (with circuit numbers) — END OF CONDUIT RUN — END OF CONDUIT RUN, CAP AND STAKE — "CONDUIT RUN CONTINUES" INDICATION --- FLEXIBLE PIGTAILS/CONNECTIONS — WM— WIREMOLD AS SPECIFIED — PM— PLUGHOLD AS SPECIFIED — BD— BUS DUCT — UFD— UNDERFLOOR DUCT <p>FIRE ALARM</p> <ul style="list-style-type: none"> ⊕ SMOKE DETECTOR ⊕ HEAT DETECTOR ⊕ DUCT SMOKE DETECTOR ⊕ DUCT SMOKE DETECTOR ⊕ HORN ⊕ HORN & LIGHT ⊕ SPEAKER ⊕ SPEAKER & LIGHT ⊕ PULL STATION ⊕ FIRE ALARM CONTROL PANEL ⊕ ANNUNCIATOR PANEL — EOL— END OF LINE DEVICE ⊕ REMOTE INDICATING LIGHT, WALL MTD. ⊕ REMOTE INDICATING LIGHT, CLG. MTD. ⊕ MAGNETIC DOOR HOLDER ⊕ FIREFIGHTER COMMUNICATION JACK ⊕ FLOW SWITCH (furnished by FP/C) ⊕ TAMPER SWITCH (furnished by FP/C) ⊕ VISUAL ONLY UNIT ⊕ FCPS FIRE CONTROL POWER SUPPLY ⊕ MONITOR MODULE ⊕ CONTROL MODULE ⊕ CARBON MONOXIDE DETECTOR 	<p>SERVICE and EQUIPMENT</p> <ul style="list-style-type: none"> ⊕ TRANSIENT VOLTAGE SURGE SUPPRESSION ⊕ VARIABLE FREQUENCY DRIVE ⊕ TRANSFORMER ⊕ DISCONNECT SWITCH ⊕ MAGNETIC STARTER ⊕ COMB. STARTER ⊕ PANELBOARD, SURFACE MOUNTED ⊕ PANELBOARD, FLUSH MOUNTED ⊕ WEATHERHEAD ⊕ UTILITY METER, AS REQUIRED ⊕ DIGITAL EQUIPMENT METER, AS REQUIRED ⊕ CURRENT TRANSFORMERS ⊕ GENERATOR, KW SHOWN ⊕ TELEPHONE TERMINAL BOARD ⊕ GROUND CONNECTION PER N.E.C. ⊕ WIREWAY ⊕ TRANSFER SWITCH ⊕ ENCLOSED CIRCUIT BREAKER ⊕ CAPACITOR <p>CONTROL</p> <ul style="list-style-type: none"> ⊕ THERMOSTAT ⊕ HUMIDISTAT ⊕ PHOTOCELL (voltage as required) ⊕ TIME CLOCK (24 hour U.O.N.) ⊕ PUSHBUTTON STATION (number of buttons indicated) ⊕ CONTROL TRANSFORMER ⊕ LIGHTING CONTACTOR ⊕ IRRIGATION CONTROLLER (120 volt xxVA connection by x/C) <ul style="list-style-type: none"> ⊕ WALL MOUNT DUAL TECHNOLOGY SENSOR ⊕ OCCUPANCY SENSOR / PHOTOCELL ⊕ ULTRASONIC SENSOR - 360° - 2 CIRCUIT ⊕ DUAL TECHNOLOGY SENSOR - 360° - 1000 SQ FT ⊕ DUAL TECHNOLOGY SENSOR - 360° - 500 SQ FT ⊕ SWITCH STYLE OCCUPANCY SENSOR ⊕ POWER PACK ⊕ DIGITAL TIME SWITCH
--	--	---

ABBREVIATIONS LEGEND

<p>A AMPS</p> <p>AC ABOVE COUNTER</p> <p>ACU- AIR CONDITIONING UNIT</p> <p>AFF ABOVE FINISHED FLOOR</p> <p>AHJ AUTHORITY HAVING JURISDICTION</p> <p>AHU- AIR HANDLING UNIT</p> <p>AIC AMPS INTERRUPTING CAPACITY</p> <p>AS ABOVE SHELF</p> <p>ATS AUTOMATIC TRANSFER SWITCH</p> <p>B- BOILER</p> <p>BC BELOW COUNTER</p> <p>BLDG BUILDING</p> <p>CHL- CHILLER</p> <p>CND (C) CONDUIT</p> <p>CKT CIRCUIT</p> <p>CKT BKR CIRCUIT BREAKER</p> <p>CT- COOLING TOWER</p> <p>CU- CONDENSING UNIT</p> <p>CUH- CABINET UNIT HEATER</p> <p>DFU- DUCT FURNACE</p> <p>DISC DISCONNECT</p> <p>DWG DRAWING</p> <p>DWH- DOMESTIC WATER HEATER</p> <p>EBB- ELECTRIC BASEBOARD</p> <p>EC ELECTRICAL CONTRACTOR</p> <p>EF- EXHAUST FAN</p> <p>EM EMERGENCY</p> <p>EMT ELECTRICAL METALLIC TUBING</p> <p>EWC ELECTRIC WATER COOLER</p> <p>EXIST (E) EXISTING</p> <p>FLA FULL LOAD AMPS</p> <p>FLEX FLEXIBLE CONDUIT</p> <p>FLR FLOOR</p> <p>FLUOR FLUORESCENT</p> <p>FSES FOOD SERVICE EQUIP. SUPPLIER</p> <p>FIS FIRE/SMOKE</p> <p>FU- FURNACE</p>	<p>GC GENERAL CONTRACTOR</p> <p>GFI GROUND FAULT INTERRUPTER</p> <p>GND GROUND</p> <p>H- HUMIDIFIER</p> <p>HID HIGH INTENSITY DISCHARGE</p> <p>HOA HAND-OFF-AUTO SELECTOR SWITCH</p> <p>HP HORSEPOWER</p> <p>HR HOUR</p> <p>HVAC HEATING/VENTILATING/AIR CONDITIONING</p> <p>IG ISOLATED GROUND</p> <p>IMC INTERMEDIATE METAL CONDUIT</p> <p>JB JUNCTION BOX</p> <p>LC LIGHT CONTROL</p> <p>LT LIGHT</p> <p>LTG LIGHTING</p> <p>LT FLEX LIQUID TIGHT FLEXIBLE METAL CONDUIT</p> <p>MAX MAXIMUM</p> <p>MC MECHANICAL CONTRACTOR</p> <p>MCC MOTOR CONTROL CENTER</p> <p>MIN MINIMUM</p> <p>MLO MAIN LUG ONLY</p> <p>MT MOUNT</p> <p>MTD MOUNTED</p> <p>MTG MOUNTING</p> <p>MUAU- MAKE-UP AIR UNIT</p> <p>NC NORMALLY CLOSED</p> <p>NIC NOT IN CONTRACT</p> <p>NL NIGHT LIGHT</p> <p>NO NORMALLY OPEN</p> <p>NTS NOT TO SCALE</p>	<p>P POLE</p> <p>P- PUMP</p> <p>PB PULL BOX</p> <p>PNL PANEL</p> <p>PRV- POWER ROOF VENTILATOR</p> <p>PVC POLY VINYL CHLORIDE</p> <p>PWR POWER</p> <p>RECEPT RECEPTACLE</p> <p>RGC RIGID GALVANIZED STEEL CONDUIT</p> <p>RTU- ROOF TOP UNIT</p> <p>SF- SUPPLY FAN</p> <p>SPEC SPECIFICATIONS</p> <p>SW SWITCH</p> <p>SWBD SWITCHBOARD</p> <p>TCC TEMPERATURE CONTROL CONTRACTOR</p> <p>TR TAMPER PROOF RECEPTACLE</p> <p>TS TAMPER PROOF SWITCH</p> <p>TYP TYPICAL</p> <p>UF UNDER FLOOR</p> <p>UH- UNIT HEATER</p> <p>UL UNDERWRITERS' LABORATORIES, INC. UNLESS NOTED OTHERWISE</p> <p>V VOLTS</p> <p>VL VERIFY LOCATION WITH OWNER</p> <p>W WATTS</p> <p>W/ WITH</p> <p>W/O WITHOUT</p> <p>WP WEATHER PROOF</p> <p>XFMR TRANSFORMER</p>
--	--	---

LIGHTING FIXTURE SCHEDULE

TYPE	MANUFACTURER	CATALOG NO.	DESCRIPTION AND COMMENTS	BALLAST INFO	FIXTURE MOUNTING HEIGHT	LAMPS
LA	COOPER LIGHTING OR EQUAL	4V72-LD5-4-FR504-UNV-EL10W-L840-WL-VT2-SS-MBK	4 INDUSTRIAL LED LAMP VAPORITITE STRIP FIXTURE.	-	MATCH EXISTING	4000 LUMENS 4000K 30W LED

ALTERNATE DEDUCT 5

- PLEASE NOTE ALL ELEVATOR SCOPE SHALL BE REMOVED IF ALTERNATE DEDUCT NUMBER 5 IS SELECTED.

GENERAL ELECTRICAL NOTES

- ALL WALL AND FLOOR PENETRATIONS ARE TO BE SEALED TO MAINTAIN ORIGINAL RATING.
- ALL CONDUITS TO BE FIELD ROUTED ALONG EXISTING PIPING AND STRUCTURAL STEEL.
- THE DIVISION 26 CONTRACTORS SHALL VISIT THE PROJECT AND DETERMINE THE EXACT EXTENT OF THE DEMOLITION WORK REQUIRED BEFORE BIDDING THE PROJECT.
- REMOVE ALL EXISTING OBSOLETE EXPOSED CONDUIT, WIRE AND UNUSED EQUIPMENT WHERE WORK IS BEING DONE EXCEPT ITEMS NOTED OTHERWISE.
- WHERE BUILDING SURFACES ARE DAMAGED BY THE REMOVAL OF OLD WORK, SURFACES SHALL BE PATCHED TO MATCH ADJACENT.
- EXISTING WORK WHICH IS PRESENTLY CONCEALED AND WHICH WILL REMAIN CONCEALED AND DOES NOT INTERFERE WITH ANY NEW WORK OF ANY TRADE NEED NOT BE REMOVED. HOWEVER, ALL CONDUIT SHALL BE CAPPED BELOW FINISH SURFACE AND THEN PATCHED TO MATCH, OR AS NOTED.
- EXISTING OPENINGS, WHICH ARE TO BE REUSED, SHALL BE MODIFIED OR ENLARGED TO SUIT THE NEW SYSTEMS AS REQUIRED. PROVIDE ALL REQUIRED CUTTING AND PATCHING.
- IF ASBESTOS IS PRESENT, IT WILL BE REMOVED OR RENDERED HARMLESS UNDER SEPARATE CONTRACT BY THE OWNER.
- THE DIVISION 26 CONTRACTOR SHALL BE RESPONSIBLE FOR PATCHING THE EXISTING WALLS TO MATCH THE ADJACENT SURFACES BEHIND ALL SURFACE MOUNTED EQUIPMENT.
- CONTRACTOR SHALL BE RESPONSIBLE FOR ALL CIRCUITING. MAXIMUM LIGHTING LOAD PER 20A-1P CIRCUIT IS 1400 WATTS. MAXIMUM RECEPTACLE LOAD PER 20A-1P CIRCUIT SHALL BE (8) DUPLEXES. SIZE MOTOR OR EQUIPMENT CIRCUITS 125% OF RATED LOAD.
- CONTRACTOR SHALL FIELD VERIFY ALL EQUIPMENT VOLTAGES AND LOADS PRIOR TO INSTALLING SERVICE TO EQUIPMENT.
- DRAWINGS ARE BASED ON EXISTING RECORD DOCUMENT AND CASUAL FIELD OBSERVATION. REPORT ANY DISCREPANCIES TO ENGINEER FOR CLARIFICATION.

BIDS	6/18/2024
	DATE ISSUED
	BTT
	DRAWN BY
	J6F
	CHECKED BY

HOBBS + BLACK ARCHITECTS
 100 N. State St.
 Ann Arbor, MI 48104
 P: 734.668.4189
 www.hobbs-black.com

STATE OF MICHIGAN
 DEPARTMENT OF TECHNOLOGY, MANAGEMENT AND BUDGET
 STATE FACILITIES ADMINISTRATION
 DESIGN AND CONSTRUCTION DIVISION
 ADAM P. LACH, RA, DIRECTOR

CADILLAC PLACE ELEVATORS UPGRADES - PHASE 1
 3044 W. GRAND BLVD., DETROIT, MI. 48202
 SOM File No. 171/21275-MNB

MATRIX
 CONSULTING ENGINEERS, INC.
 1601 E César E. Chávez Ave
 Lansing, MI 48906

Lerch Bates
 BUILDING INSIGHT
 950 Boston Street SE Grand
 Rapids MI 49507
 CONSULTANT

ELECTRICAL SYMBOLS, ABBREV, NOTES, SCHEDULES

SHEET TITLE

21323

PROJECT NUMBER

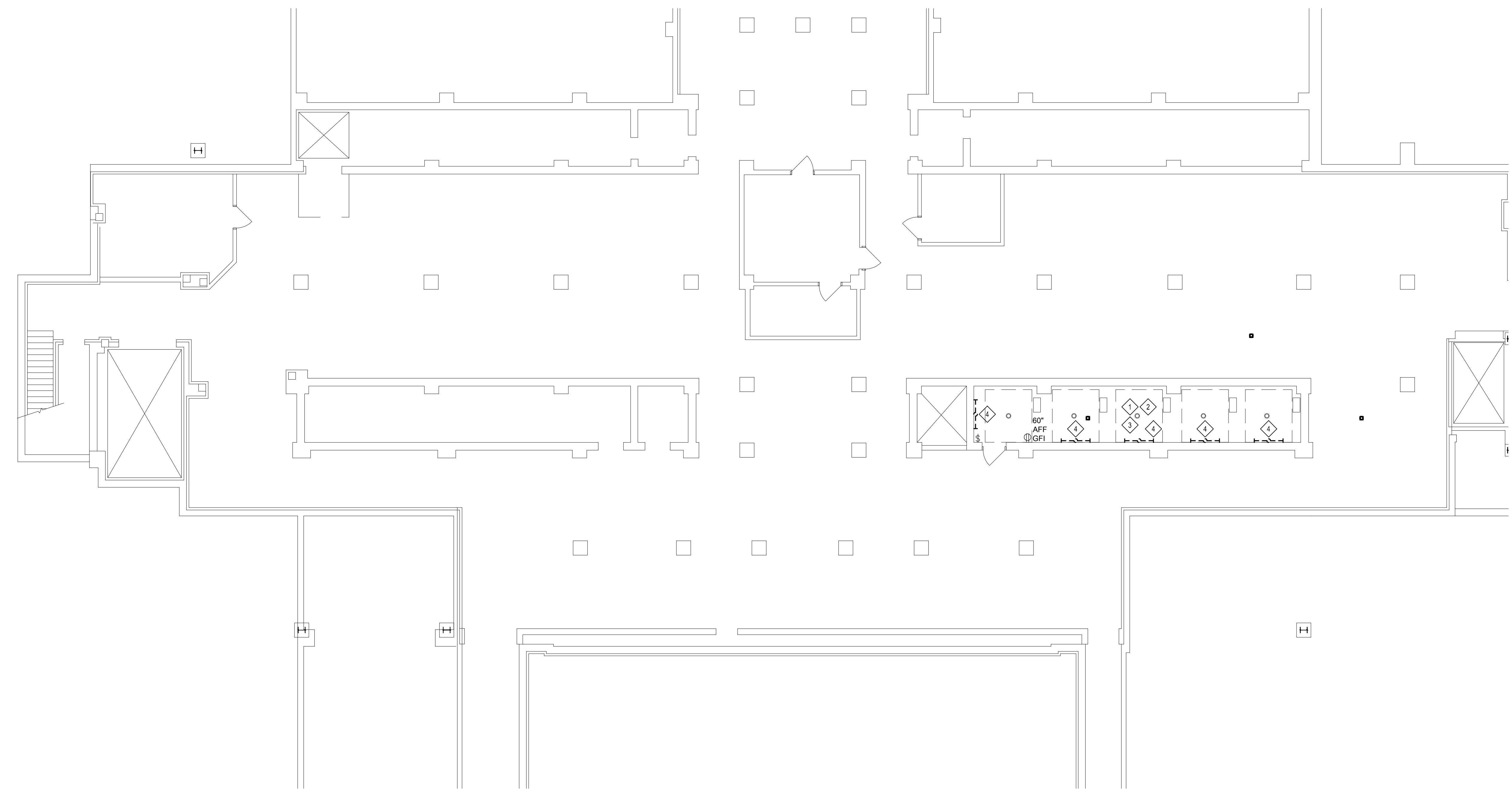
E-100

SHEET NUMBER

DEMOLITION NOTES

- 1 EXISTING LIGHT FIXTURES IN THIS AREA TO REMAIN, UNLESS NOTED OTHERWISE.
- 2 EXISTING DEVICES IN THIS AREA TO REMAIN, UNLESS NOTED OTHERWISE.
- 3 EXISTING EQUIPMENT IN THIS AREA TO REMAIN, UNLESS NOTED OTHERWISE.
- 4 DISCONNECT & REMOVE EXISTING LIGHT FIXTURE. ASSOCIATED CONDUIT & WIRE TO REMAIN FOR NEW FIXTURE.

BIDS 6/18/2024
 DATE ISSUED
 BT
 DRAWN BY
 JSF
 CHECKED BY



BASEMENT FLOOR PLAN - ELECTRICAL - DEMOLITION
 SCALE: 1/8" = 1'-0"

HOBBS + BLACK
ARCHITECTS
 100 N. State St.
 Ann Arbor, MI 48104
 P: 734.663.4189
 www.hobbs-black.com

STATE OF MICHIGAN
 DEPARTMENT OF TECHNOLOGY, MANAGEMENT AND BUDGET
 STATE FACILITIES ADMINISTRATION
 DESIGN AND CONSTRUCTION DIVISION
 ADAM P. LACH, RA, DIRECTOR

CADILLAC PLACE ELEVATORS UPGRADES - PHASE 1
 3044 W. GRAND BLVD. DETROIT, MI. 48202
 SDM File No. 171/21275.MNB

MATRIX
 CONSULTING ENGINEERS, INC.
 1601 E César E. Chávez Ave
 Lansing, MI 48906

Lerch Bates
 BUILDING INSIGHT
 950 Boston Street SE Grand
 Rapids MI 49507
 CONSULTANT

BASEMENT FLOOR PLAN ELECTRICAL DEMOLITION

SHEET TITLE
 21323
 PROJECT NUMBER
 E-300
 SHEET NUMBER

DEMOLITION NOTES

- ① EXISTING LIGHT FIXTURES IN THIS AREA TO REMAIN, UNLESS NOTED OTHERWISE.
- ② EXISTING DEVICES IN THIS AREA TO REMAIN, UNLESS NOTED OTHERWISE.
- ③ EXISTING EQUIPMENT IN THIS AREA TO REMAIN, UNLESS NOTED OTHERWISE.

BIDS 6/18/2024
 DATE ISSUED
 BTB
 DRAWN BY
 JSF
 CHECKED BY

HOBBS + BLACK
ARCHITECTS
 100 N. State St.
 Ann Arbor, MI 48104
 P: 734.663.4189
 www.hobbs-black.com

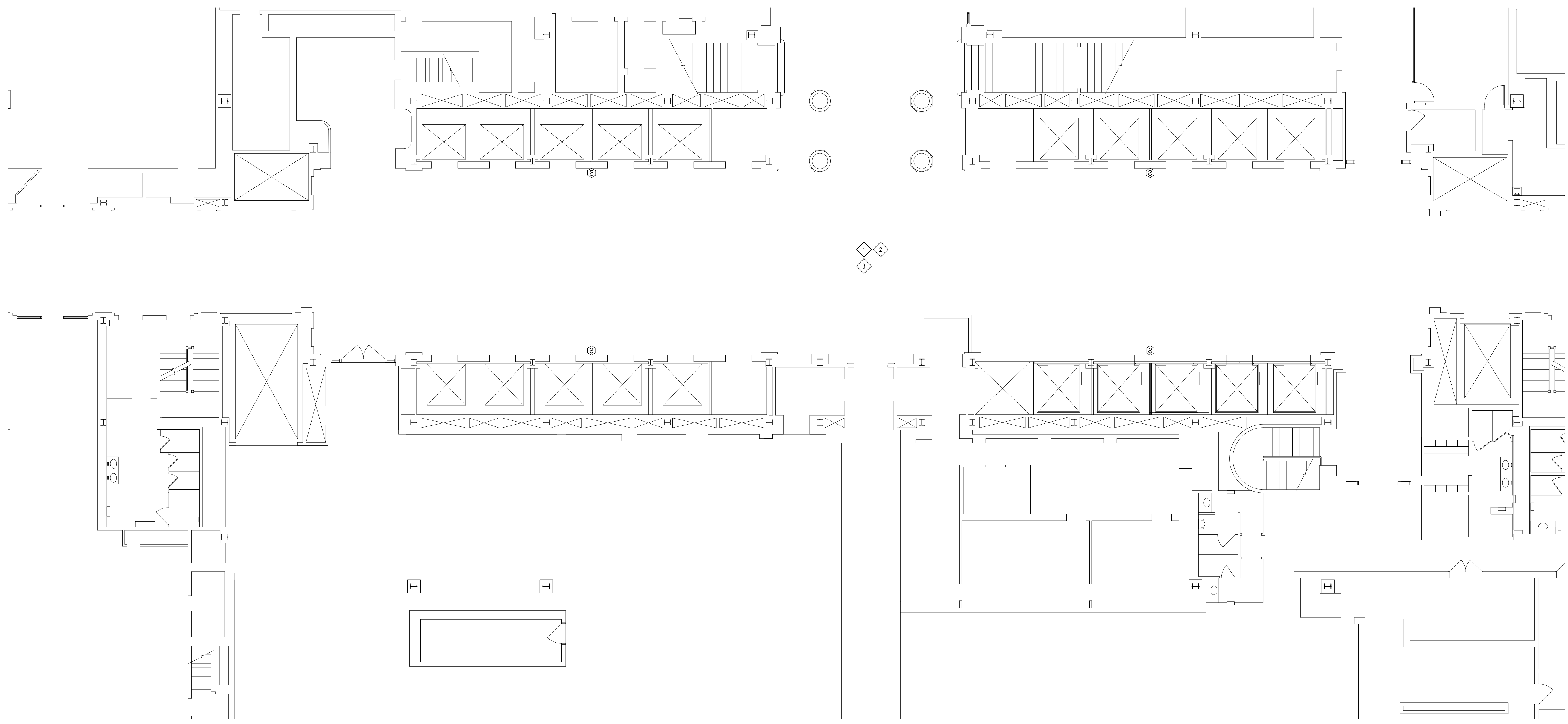
STATE OF MICHIGAN
 DEPARTMENT OF TECHNOLOGY, MANAGEMENT AND BUDGET
 STATE FACILITIES ADMINISTRATION
 DESIGN AND CONSTRUCTION DIVISION
 ADAM P. LACH, RA, DIRECTOR
 CADILLAC PLACE ELEVATORS UPGRADES - PHASE 1
 3044 W. GRAND BLVD. DETROIT, MI. 48202
 SDM File No. 171/21275.MNB

MATRIX
 CONSULTING ENGINEERS, INC.
 1601 E César E. Chávez Ave
 Lansing, MI 48906

Lerch Bates
 BUILDING INSIGHT
 950 Boston Street SE Grand
 Rapids MI 49507
 CONSULTANT

**FIRST FLOOR PLAN
 ELECTRICAL
 DEMOLITION**

SHEET TITLE
 21323
 PROJECT NUMBER
 E-301
 SHEET NUMBER



FIRST FLOOR PLAN - ELECTRICAL - DEMOLITION
 SCALE: 1/8" = 1'-0"

DEMOLITION NOTES

- 1 EXISTING LIGHT FIXTURES IN THIS AREA TO REMAIN, UNLESS NOTED OTHERWISE.
- 2 EXISTING DEVICES IN THIS AREA TO REMAIN, UNLESS NOTED OTHERWISE.
- 3 EXISTING EQUIPMENT IN THIS AREA TO REMAIN, UNLESS NOTED OTHERWISE.
- 4 NOT USED.
- 5 DISCONNECT EQUIPMENT FOR REMOVAL BY OTHERS. ASSOCIATED CONDUIT & WIRE TO REMAIN FOR NEW EQUIPMENT.

BIDS 6/18/2024
 DATE ISSUED
 BT
 DRAWN BY
 JSF
 CHECKED BY

HOBBS + BLACK
ARCHITECTS
 100 N. State St.
 Ann Arbor, MI 48104
 P: 734.663.4189
 www.hobbs-black.com

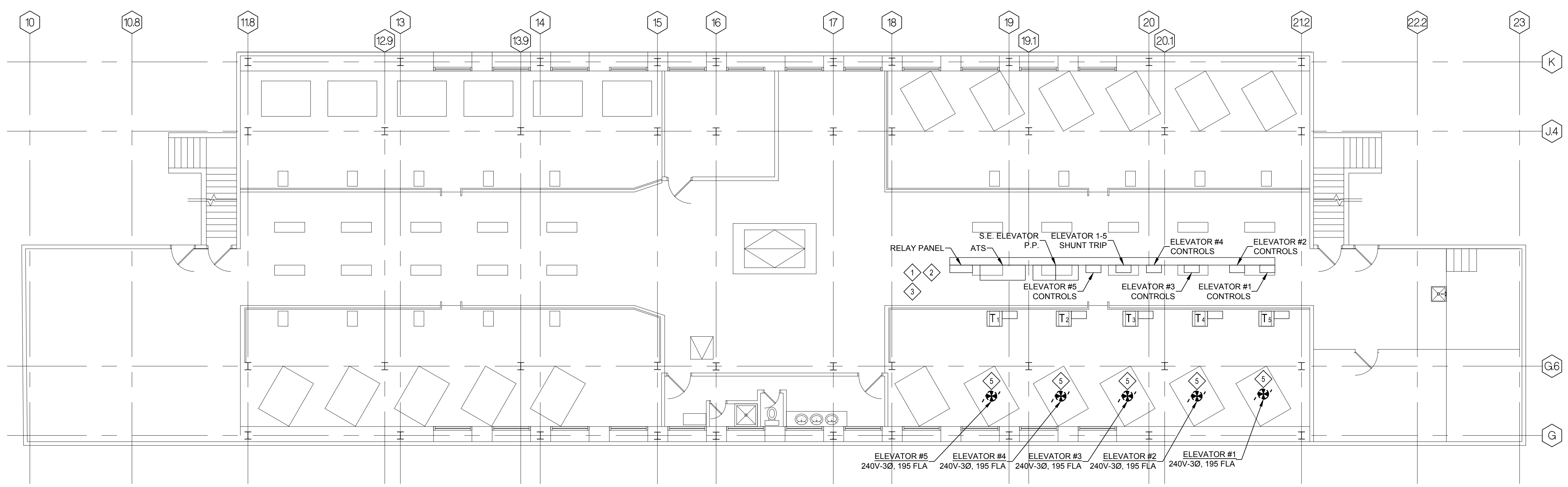
STATE OF MICHIGAN
 DEPARTMENT OF TECHNOLOGY, MANAGEMENT AND BUDGET
 STATE FACILITIES ADMINISTRATION
 DESIGN AND CONSTRUCTION DIVISION
 ADAM P. LACH, RA, DIRECTOR
 CADILLAC PLACE ELEVATORS UPGRADES - PHASE 1
 3044 W. GRAND BLVD. DETROIT, MI. 48202
 SDM File No. 171/21275.MNB

MATRIX
 CONSULTING ENGINEERS, INC.
 1601 E César E. Chávez Ave
 Lansing, MI 48906

Lerch Bates
 BUILDING INSIGHT
 950 Boston Street SE Grand
 Rapids MI 49507
 CONSULTANT

PENTHOUSE FLOOR PLAN ELECTRICAL DEMOLITION

SHEET TITLE
 21323
 PROJECT NUMBER
 E-302
 SHEET NUMBER



PENTHOUSE FLOOR PLAN - ELECTRICAL - DEMOLITION
 SCALE: 1/8" = 1'-0"

DEMOLITION NOTES

- 1 EXISTING LIGHT FIXTURES IN THIS AREA TO REMAIN, UNLESS NOTED OTHERWISE.
- 2 EXISTING DEVICES IN THIS AREA TO REMAIN, UNLESS NOTED OTHERWISE.
- 3 EXISTING EQUIPMENT IN THIS AREA TO REMAIN, UNLESS NOTED OTHERWISE.
- 4 NOT USED.
- 5 NOT USED.
- 6 DISCONNECT & REMOVE EXISTING EQUIPMENT. REMOVE ASSOCIATED CONDUIT & WIRE.
- 7 DISCONNECT & REMOVE EXISTING EQUIPMENT. MODIFY ASSOCIATED CONDUIT & WIRE FOR NEW EQUIPMENT.

BIDS 6/18/2024
 DATE ISSUED
 BT
 DRAWN BY
 JSF
 CHECKED BY

HOBBS + BLACK
ARCHITECTS
 100 N. State St.
 Ann Arbor, MI 48104
 P: 734.663.4189
 www.hobbs-black.com

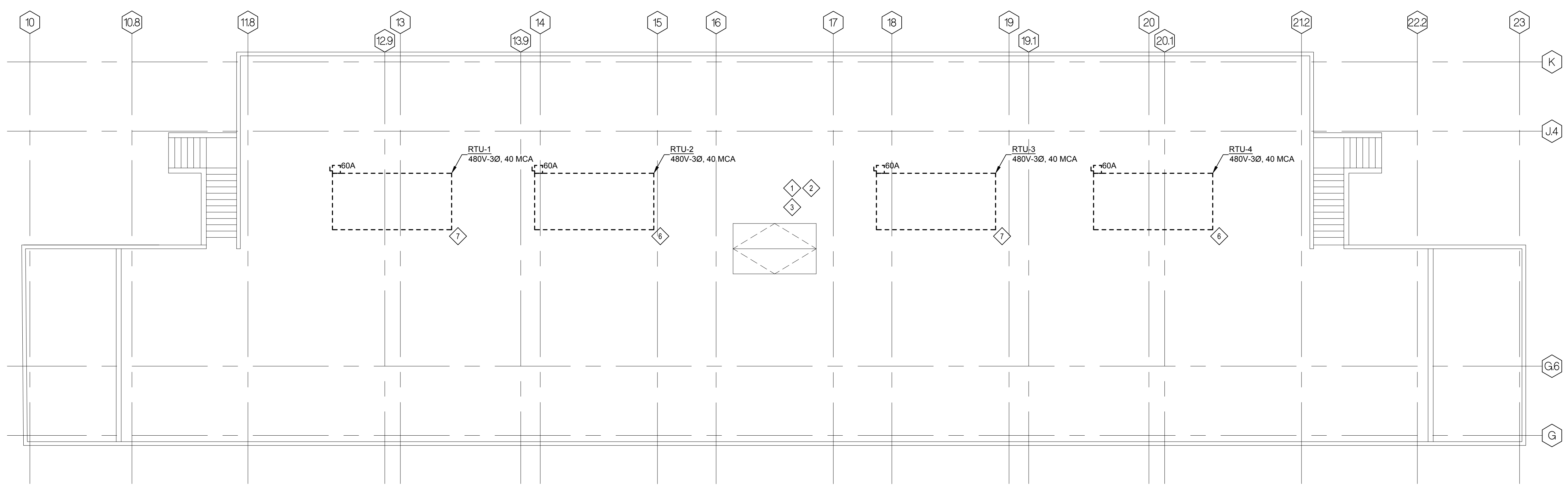
STATE OF MICHIGAN
 DEPARTMENT OF TECHNOLOGY, MANAGEMENT AND BUDGET
 STATE FACILITIES ADMINISTRATION
 DESIGN AND CONSTRUCTION DIVISION
 ADAM P. LACH, RA, DIRECTOR
 CADILLAC PLACE ELEVATORS UPGRADES - PHASE 1
 3044 W. GRAND BLVD. DETROIT, MI. 48202
 SDM File No. 171/21275.MNB

MATRIX
 CONSULTING ENGINEERS, INC.
 1601 E César E. Chávez Ave
 Lansing, MI 48906

Lerch Bates
 BUILDING INSIGHT
 950 Boston Street SE Grand
 Rapids MI 49507
 CONSULTANT

**ROOF
 PLAN
 ELECTRICAL
 DEMOLITION**

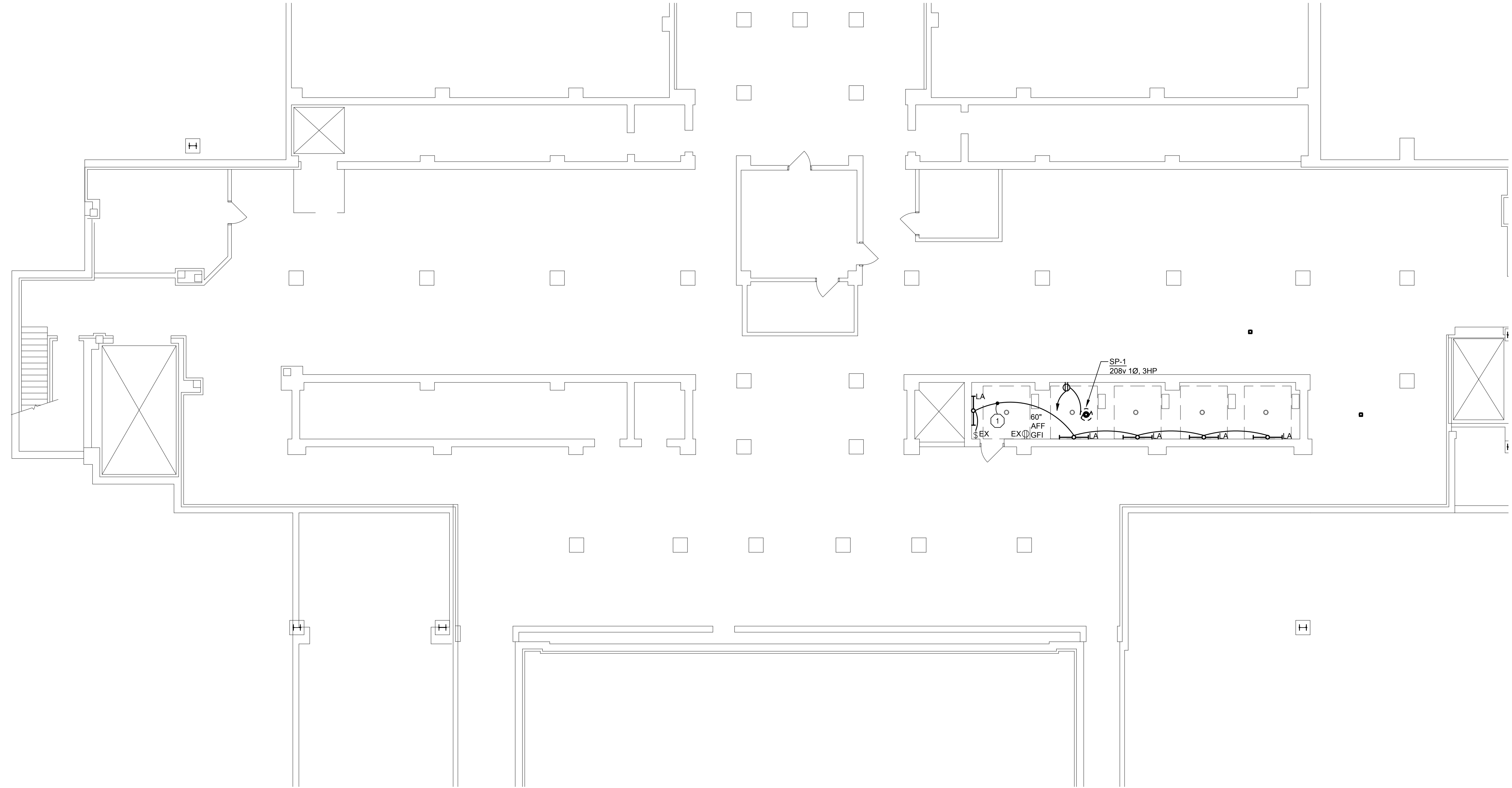
SHEET TITLE
 21323
 PROJECT NUMBER
 E-303
 SHEET NUMBER



ROOF PLAN - ELECTRICAL - DEMOLITION
 SCALE: 1/8" = 1'-0"

ELECTRICAL KEY NOTES

- ① CONTRACTOR SHALL REUSE EXISTING CIRCUIT FOR NEW PIT LIGHTS.



BASEMENT FLOOR PLAN - ELECTRICAL - POWER
SCALE: 1/8" = 1'-0"

Sheet Size - 24x36
© Copyright 2023 Hobbs+Black Associates, Inc.
ALL RIGHTS RESERVED

BIDS 6/18/2024
DATE ISSUED
BTT
DRAWN BY
JSF
CHECKED BY

HOBBS + BLACK
ARCHITECTS
100 N. State St.
Ann Arbor, MI 48104
P: 734.663.4189
www.hobbs-black.com

STATE OF MICHIGAN
DEPARTMENT OF TECHNOLOGY, MANAGEMENT AND BUDGET
STATE FACILITIES ADMINISTRATION
DESIGN AND CONSTRUCTION DIVISION
ADAM P. LACH, RA, DIRECTOR
CADILLAC PLACE ELEVATORS UPGRADES - PHASE 1
3044 W. GRAND BLVD. DETROIT, MI. 48202
SDM File No. 171/21275.MNB
PROJECT

MATRIX
CONSULTING ENGINEERS, INC.
1601 E César E. Chávez Ave
Lansing, MI 48906

Lerch Bates
BUILDING INSIGHT
950 Boston Street SE Grand
Rapids MI 49507
CONSULTANT

**BASEMENT FLOOR PLAN
ELECTRICAL
POWER**

SHEET TITLE
21323
PROJECT NUMBER
E-500
SHEET NUMBER

GENERAL ELECTRICAL NOTES

1. ALL DEVICES ARE EXISTING UNLESS OTHERWISE NOTED.

BIDS	6/18/2024
DATE ISSUED	BTT
DRAWN BY	J5F
CHECKED BY	

HOBBS + BLACK
ARCHITECTS
 100 N. State St.
 Ann Arbor, MI 48104
 P: 734.663.4189
 www.hobbs-black.com

STATE OF MICHIGAN
 DEPARTMENT OF TECHNOLOGY, MANAGEMENT AND BUDGET
 STATE FACILITIES ADMINISTRATION
 DESIGN AND CONSTRUCTION DIVISION
 ADAM P. LACH, RA, DIRECTOR

CADILLAC PLACE ELEVATORS UPGRADES - PHASE 1
 3044 W. GRAND BLVD. DETROIT, MI. 48202
 SDM File No. 171/21275.MNB

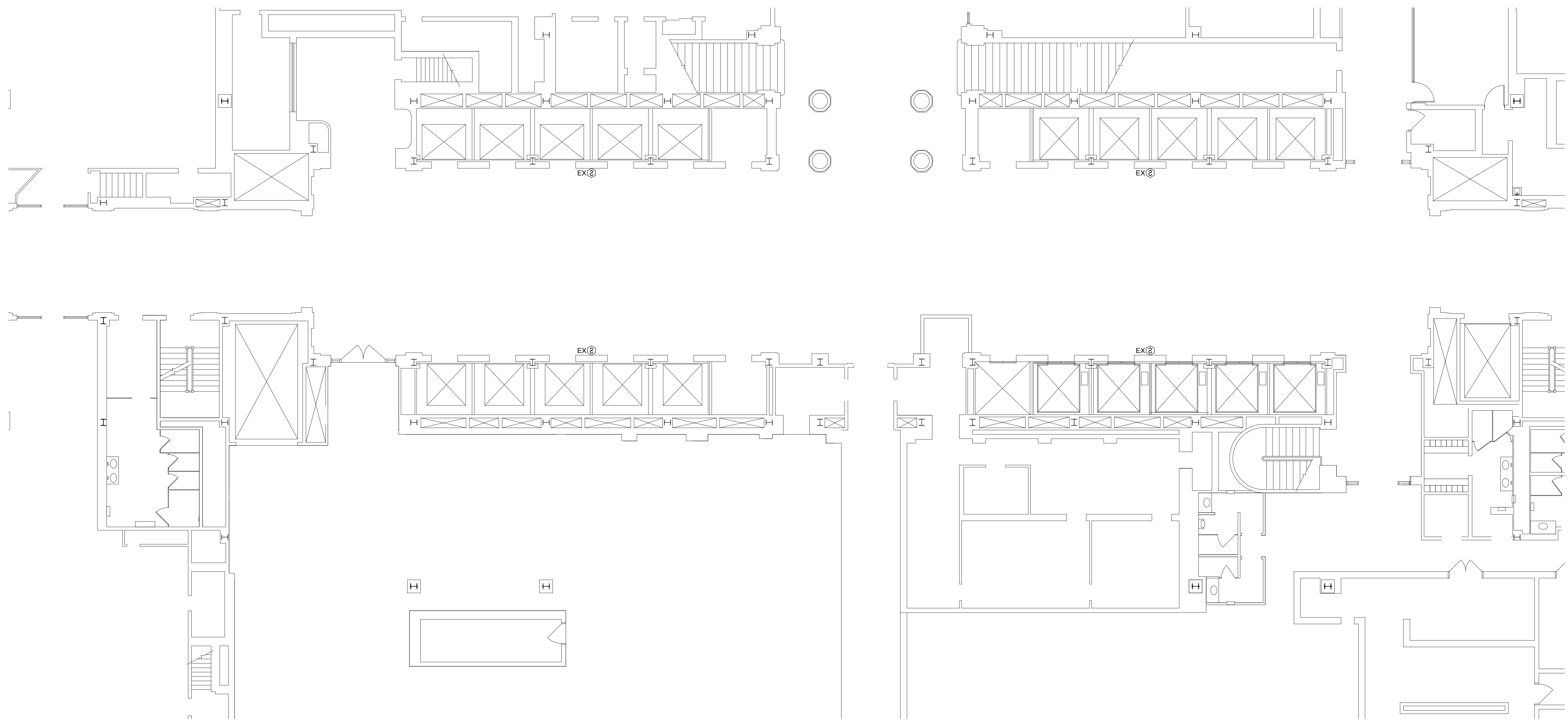
PROJECT

MATRIX
 CONSULTING ENGINEERS, INC.
 1601 E César E. Chávez Ave
 Lansing, MI 48906

Lerch Bates
 BUILDING INSIGHT
 950 Boston Street SE Grand
 Rapids MI 49507
 CONSULTANT

**FIRST FLOOR PLAN
 ELECTRICAL
 POWER**

SHEET TITLE
21323
PROJECT NUMBER
E-501
SHEET NUMBER



FIRST FLOOR PLAN - ELECTRICAL - POWER
 SCALE: 1/8" = 1'-0"

ELECTRICAL KEY NOTES

- ① TERMINATE NEW EQUIPMENT. RE-USE EXISTING CIRCUIT.

BIDS 6/18/2024
 DATE ISSUED
 BT
 DRAWN BY
 JSF
 CHECKED BY

HOBBS + BLACK
 ARCHITECTS

100 N. State St.
 Ann Arbor, MI 48104
 P: 734.663.4189
 www.hobbs-black.com

STATE OF MICHIGAN
 DEPARTMENT OF TECHNOLOGY, MANAGEMENT AND BUDGET
 STATE FACILITIES ADMINISTRATION
 DESIGN AND CONSTRUCTION DIVISION
 ADAM P. LACH, RA, DIRECTOR

CADILLAC PLACE ELEVATORS UPGRADES - PHASE 1
 3044 W. GRAND BLVD. DETROIT, MI. 48202
 SDM File No. 171/21275.MNB

MATRIX
 CONSULTING ENGINEERS, INC.
 1601 E César E. Chávez Ave
 Lansing, MI 48906

Lerch Bates
 BUILDING INSIGHT
 950 Boston Street SE Grand
 Rapids MI 49507
 CONSULTANT

**PENTHOUSE
 FLOOR PLAN
 ELECTRICAL
 POWER**

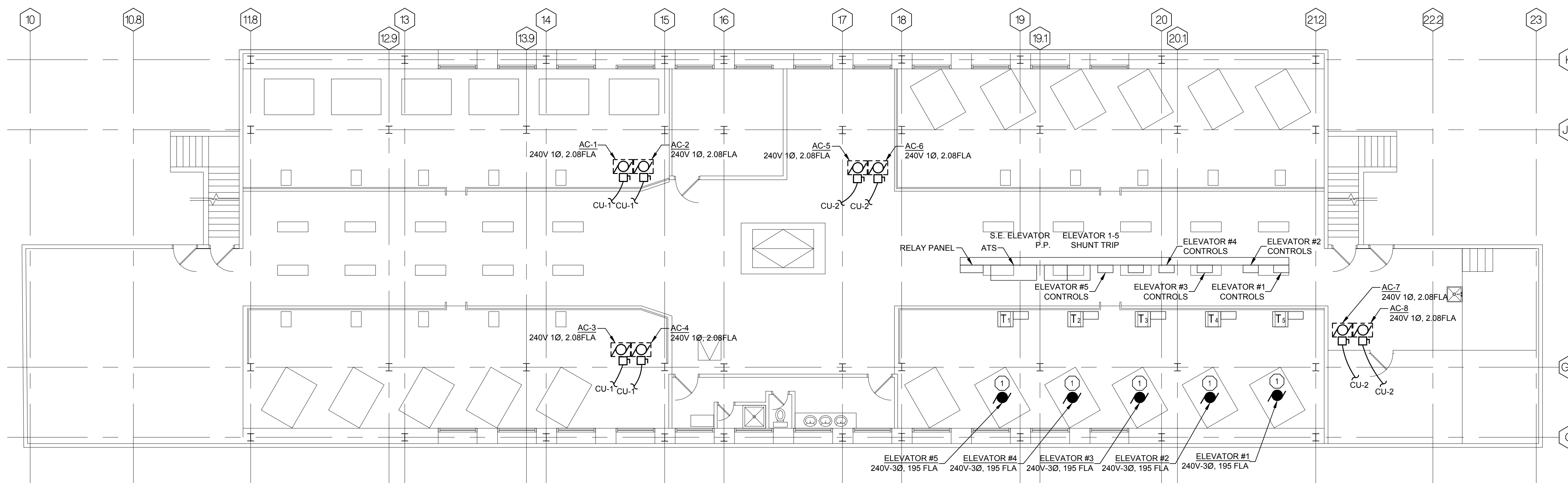
SHEET TITLE

21323

PROJECT NUMBER

E-502

SHEET NUMBER



PENTHOUSE FLOOR PLAN - ELECTRICAL - POWER
 SCALE: 1/8" = 1'-0"

ELECTRICAL KEY NOTES

- ① MODIFY CONDUIT AND WIRE. RE-USE EXISTING CIRCUIT.

BIDS 6/18/2024
 DATE ISSUED
 BTJ
 DRAWN BY
 JSF
 CHECKED BY

HOBBS + BLACK
ARCHITECTS
 100 N. State St.
 Ann Arbor, MI 48104
 P: 734.663.4189
 www.hobbs-black.com

STATE OF MICHIGAN
 DEPARTMENT OF TECHNOLOGY, MANAGEMENT AND BUDGET
 STATE FACILITIES ADMINISTRATION
 DESIGN AND CONSTRUCTION DIVISION
 ADAM P. LACH, RA, DIRECTOR
 CADILLAC PLACE ELEVATORS UPGRADES - PHASE 1
 3044 W. GRAND BLVD. DETROIT, MI. 48202
 SDM File No. 171/21275.MNB

MATRIX
 CONSULTING ENGINEERS, INC.
 1601 E César E. Chávez Ave
 Lansing, MI 48906

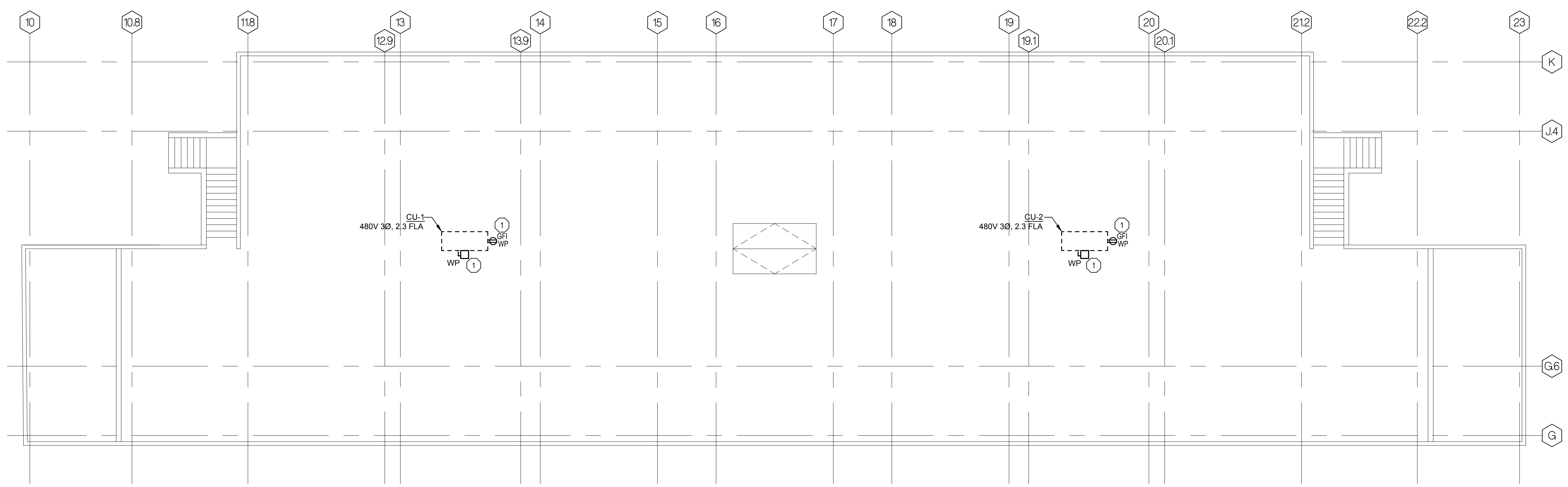
Lerch Bates
 BUILDING INSIGHT
 950 Boston Street SE Grand
 Rapids MI 49507
 CONSULTANT

**ROOF
 PLAN
 ELECTRICAL
 POWER**

SHEET TITLE

21323
 PROJECT NUMBER

E-503
 SHEET NUMBER



ROOF PLAN - ELECTRICAL - POWER
 0 1 5 10 20
 SCALE: 1/8" = 1'-0"